

## 2021-yil yanvar oyida o‘tkazilgan chet tilini bilish va egallash darajasini baholash test sinovi natijalarining statistik tahlili

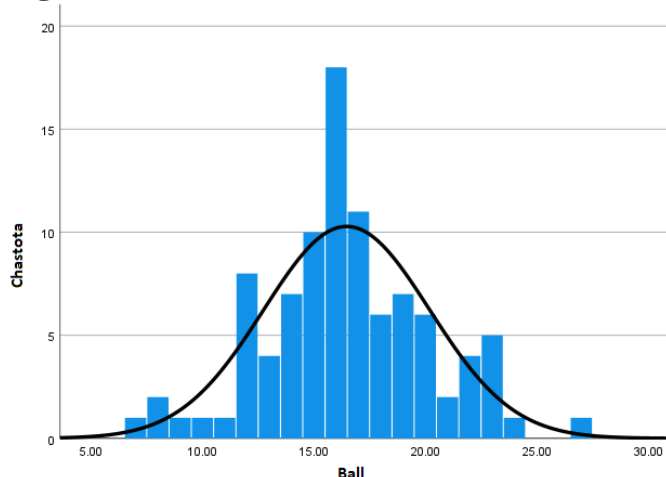
2021-yil yanvar oyida o‘tkazilgan Ingliz tilidan B2 darajasi uchun sinovlarning 1-smenasida 96 nafar, 2-smenada esa 78 nafar talabgor ishtirok etdi. Test sinovlarining tinglab tushunish, o‘qish va leksik-grammatik kompetensiyalar bo‘limlari klassik hamda zamonaviy test nazariyalari asosida statistik tahlil qilindi.

### I. Test sinovlarining klassik test nazariyasi bo‘yicha tahlili

#### INGLIZ TILI, 1-SMENA

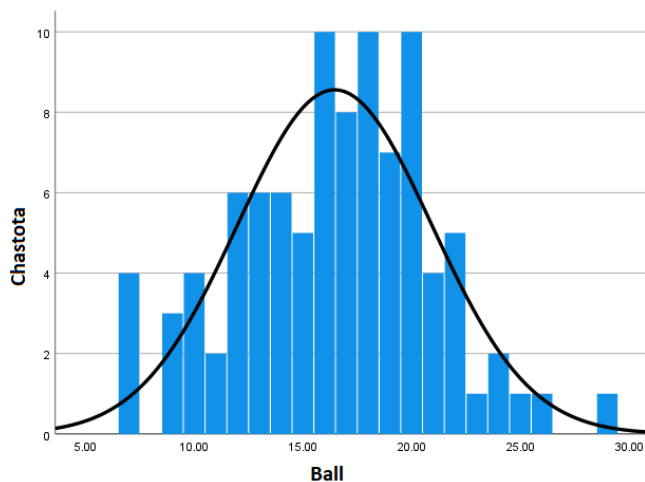
Jami qatnashchilar:	96
O‘rtacha qiymat:	16,47
Moda:	16
Mediana:	16
Kurtosis:	0,318
Skewness:	0,066
Standart tafovut:	3,71
Dispersiya:	13,87
Diapazon:	20
Minimal:	7
Maksimal:	27

#### Tinglab tushunish



Jami qatnashchilar:	96
O‘rtacha qiymat:	16,46
Moda:	16 <sup>a</sup>
Mediana:	17
Kurtosis:	-0,062
Skewness:	-0,059
Standart tafovut:	4,47
Dispersiya:	20,02
Diapazon:	22
Minimal:	7
Maksimal:	29

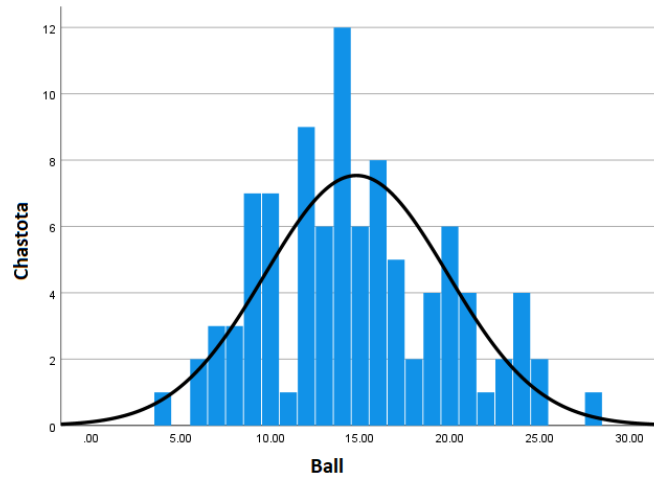
#### O‘qish



<sup>a</sup> multi-modal, eng kichik moda qiymati olingan

## Leksik va grammatik kompetensiyalar

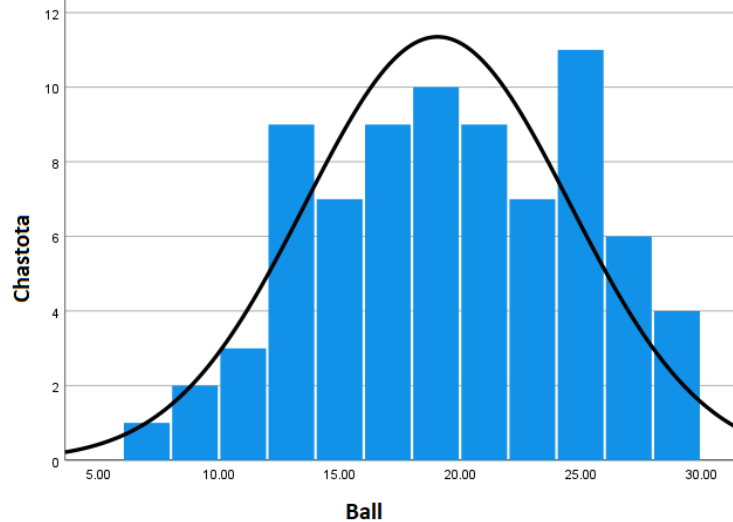
Jami qatnashchilar:	96
O'rtacha qiymat:	14,79
Moda:	14
Mediana:	14
Kurtosis:	-0,404
Skewness:	0,318
Standart tafovut:	5,08
Dispersiya:	25,81
Diapazon:	24
Minimal:	4
Maksimal:	28



## INGLIZ TILI, 2-SMENA

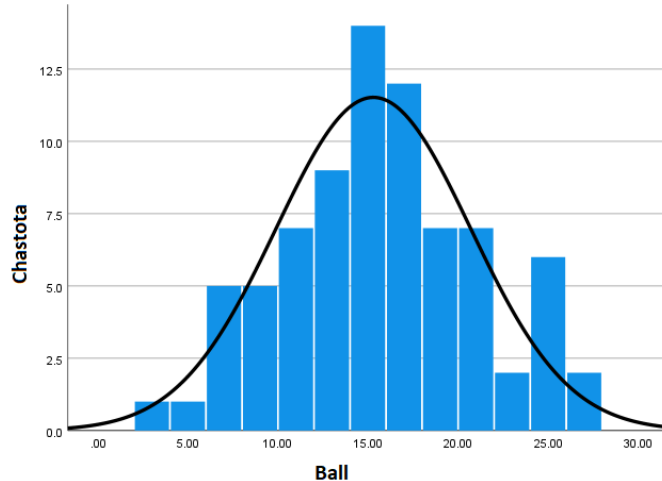
### Tinglab tushunish

Jami qatnashchilar:	78
O'rtacha qiymat:	19,06
Moda:	16 <sup>a</sup>
Mediana:	19
Kurtosis:	-0,889
Skewness:	-0,114
Standart tafovut:	5,48
Dispersiya:	30,06
Diapazon:	22
Minimal:	7
Maksimal:	29



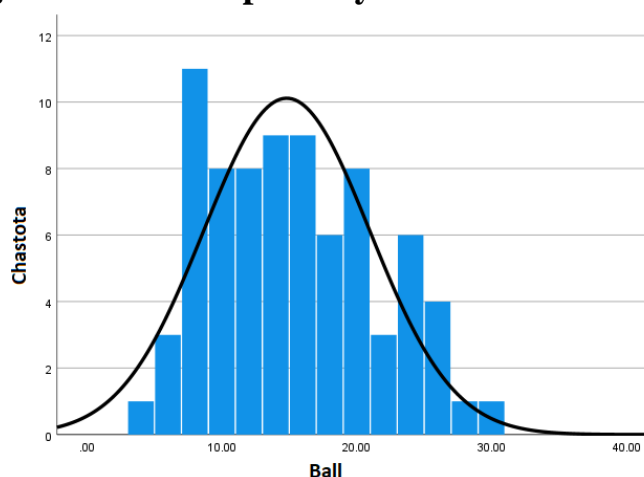
### O'qish

Jami qatnashchilar:	78
O'rtacha qiymat:	15,29
Moda:	15
Mediana:	15
Kurtosis:	-0,452
Skewness:	0,117
Standart tafovut:	5,40
Dispersiya:	29,17
Diapazon:	24
Minimal:	3
Maksimal:	27



### Leksik va grammatik kompetensiyalar

Jami qatnashchilar: 78  
 O'rtacha qiymat: 14,81  
 Moda: 7<sup>a</sup>  
 Mediana: 14  
 Kurtosis: -0,826  
 Skewness: 0,329  
 Standart tafovut: 6,15  
 Dispersiya: 37,85  
 Diapazon: 25  
 Minimal: 4  
 Maksimal: 29



### Ishonchlilik tahlili

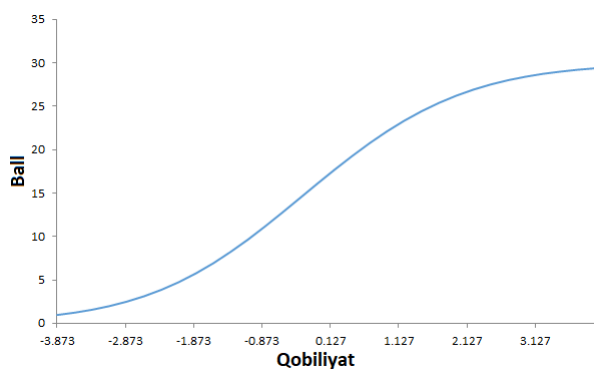
Til	Bo'lim	alpha	SEM
Ingliz tili (1-smena)	Tinglab tushunish	0,54	2,51
	O'qish	0,70	2,42
	Leksik va grammatik kompetensiyalar	0,78	2,35
Ingliz tili (2-smena)	Tinglab tushunish	0,81	2,35
	O'qish	0,78	2,51
	Leksik va grammatik kompetensiyalar	0,86	2,31

## II. Test sinovlarining Rash modeli bo'yicha tahlili

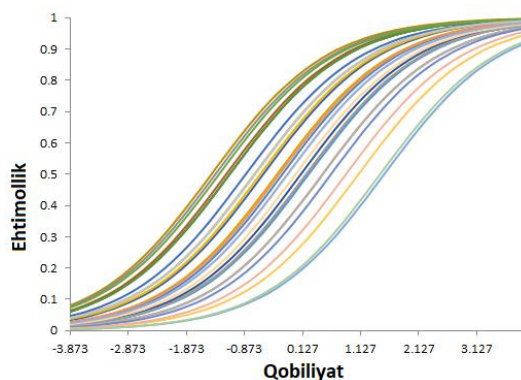
### INGLIZ TILI, 1-SMENA

Tinglab tushunish		O'qish		Leksik va grammatik kompetensiyalar	
1	-1.128	1	0.5835	1	-1.152
2	-1.187	2	-0.723	2	0.7993
3	0.1904	3	-1.957	3	-1.611
4	-1.44	4	0.5835	4	-1.928
5	0.0987	5	-0.041	5	0.4342
6	-1.128	6	-1.558	6	-2.848
7	-0.222	7	-0.23	7	0.2352
8	0.4705	8	-1.558	8	-0.451
9	-1.374	9	0.7363	9	0.692
10	-0.314	10	-0.828	10	-3.467
11	-0.551	11	0.8954	11	0.0883
12	-1.128	12	-1.631	12	0.9664
13	0.2364	13	-0.183	13	1.7635
14	-0.699	14	0.1006	14	-0.058
15	0.1904	15	-1.166	15	1.0828
16	-0.6	16	0.0534	16	1.7635
17	-0.853	17	-0.423	17	0.1371
18	-1.31	18	-0.723	18	1.0828
19	1.5297	19	-0.672	19	0.5358
20	-0.268	20	-1.049	20	1.1428
21	0.4705	21	-0.326	21	0.4847
22	1.0889	22	1.2412	22	-0.707
23	0.6155	23	-0.374	23	-0.759
24	-0.699	24	0.5835	24	0.3341
25	-0.13	25	-0.882	25	0.9664
26	0.8696	26	-2.254	26	-0.501
27	-0.699	27	0.9501	27	-0.106
28	0.0073	28	1.5733	28	0.3341
29	-0.13	29	0.6338	29	-0.867
30	1.4606	30	0.9501	30	0.4342

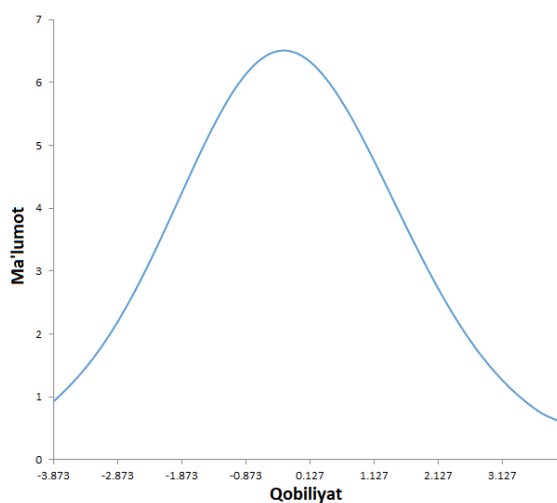
## *Tinglab tushunish bo'limi*



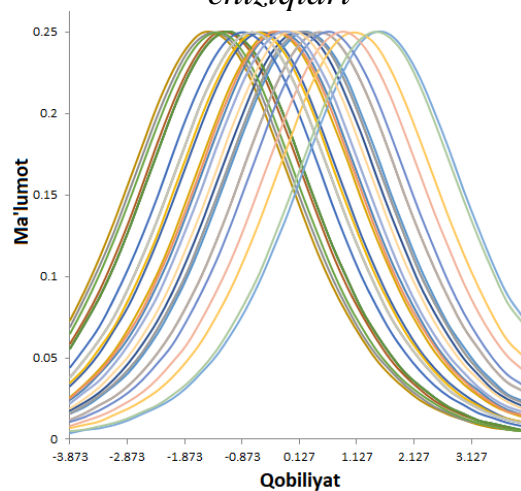
*Test xarakteristika chizig'i*



*Elementga javob funksiyasi chiziqlari*

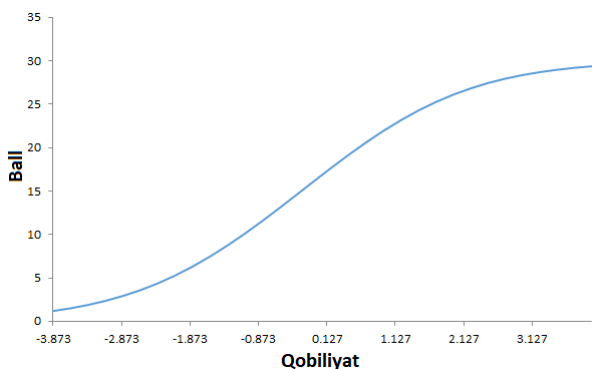


*Test ma'lumot chizig'i*

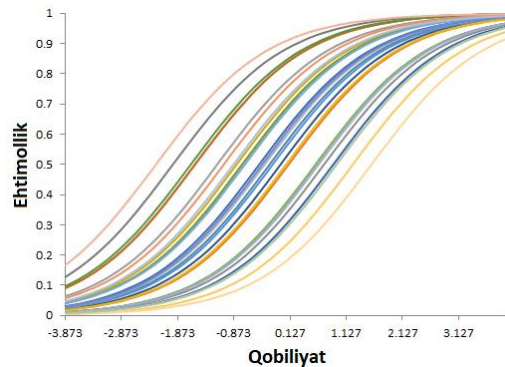


*Element ma'lumoti funksiyasi chiziqlari*

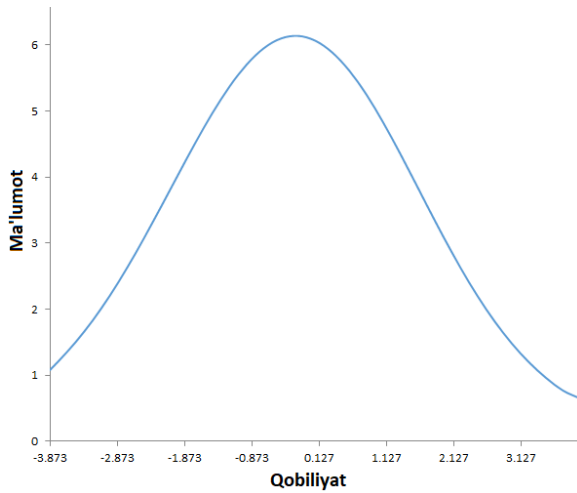
## *O'qish bo'limi*



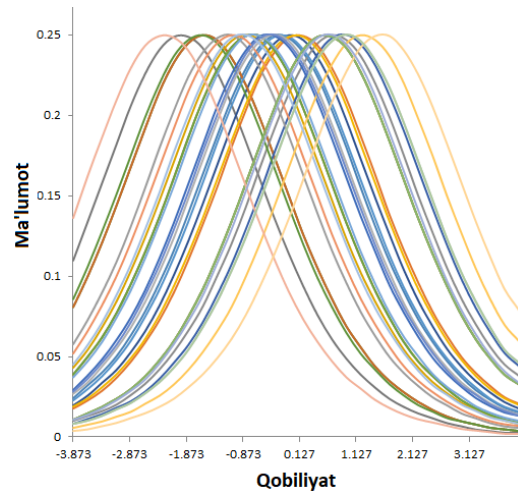
*Test xarakteristika chizig'i*



*Elementga javob funksiyasi chiziqlari*

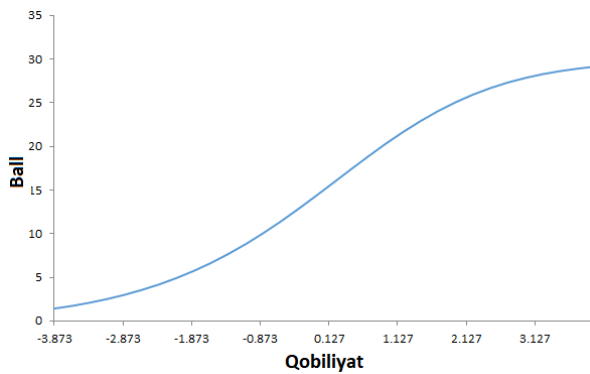


*Test ma'lumot chizig'i*

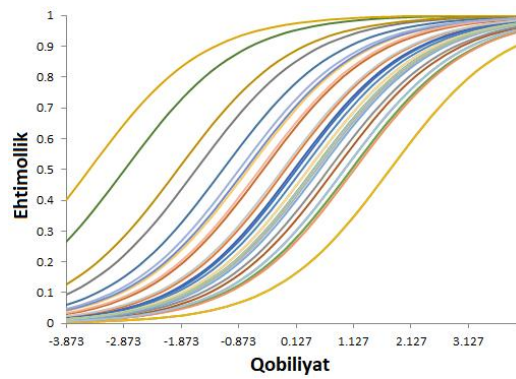


*Element ma'lumoti funksiyasi chiziq-lari*

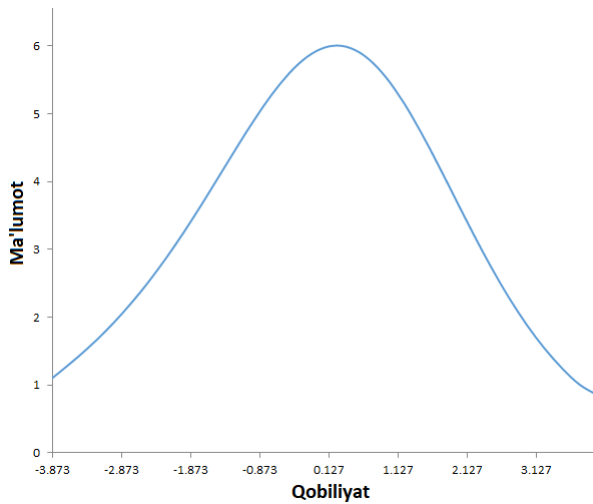
***Leksik va grammatik kompetensiyalar bo'limi***



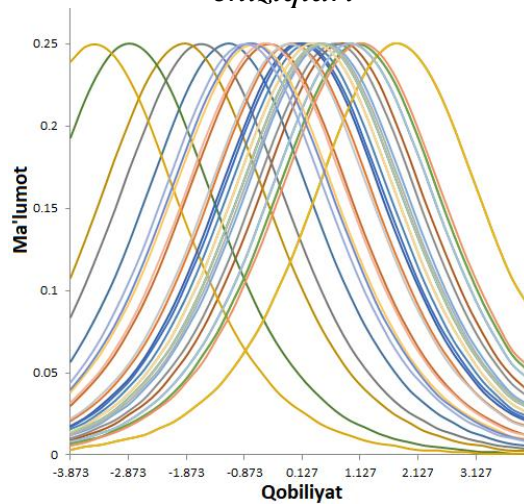
*Test xarakteristika chizig'i*



*Elementga javob funksiyasi chiziq-lari*



*Test ma'lumot chizig'i*

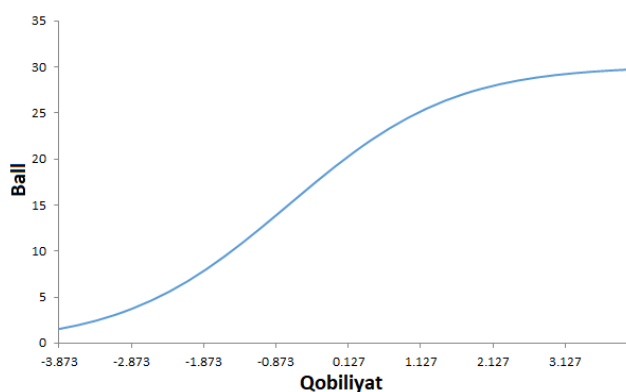


*Element ma'lumoti funksiyasi chiziq-lari*

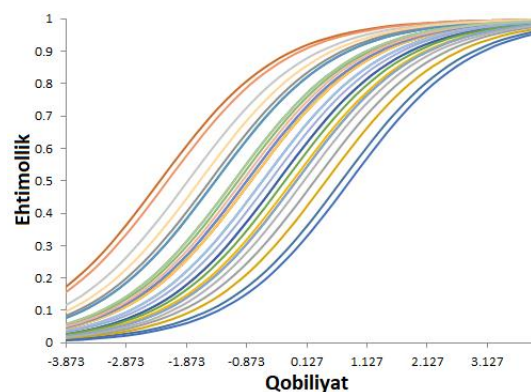
**INGLIZ TILI, 2-SMENA**

Tinglab tushunish		O'qish		Leksik va grammatik kompetensiyalar	
1	0.7035	1	-1.143	1	-1.548
2	-0.048	2	-0.481	2	-0.863
3	-0.356	3	0.93	3	1.7287
4	-0.806	4	-0.605	4	-0.661
5	-0.874	5	-0.797	5	-0.863
6	-1.394	6	-0.121	6	-1.149
7	-0.609	7	0.5391	7	1.453
8	-2.316	8	0.4771	8	-0.147
9	-1.477	9	-0.36	9	0.8324
10	0.4455	10	-0.605	10	-0.932
11	-0.356	11	-0.18	11	-0.932
12	-1.085	12	-0.797	12	0.7622
13	-1.394	13	-0.668	13	-2.031
14	-0.806	14	1.2959	14	-1.003
15	0.2582	15	0.862	15	-0.863
16	-0.109	16	-0.42	16	0.1051
17	0.8379	17	0.2947	17	0.7622
18	-0.232	18	0.0565	18	0.6932
19	-0.048	19	0.1751	19	0.0418
20	-2.185	20	0.5391	20	-0.53
21	0.0739	21	0.1157	21	0.7622
22	-0.806	22	0.4771	22	-0.932
23	-0.874	23	0.0565	23	1.2852
24	-1.013	24	0.862	24	1.7287
25	-0.609	25	-0.18	25	-1.003
26	-0.943	26	-0.36	26	0.9766
27	-1.848	27	0.0565	27	0.3609
28	-1.654	28	-0.42	28	0.8324
29	-0.481	29	-0.543	29	0.4916
30	-1.085	30	-0.42	30	1.2852

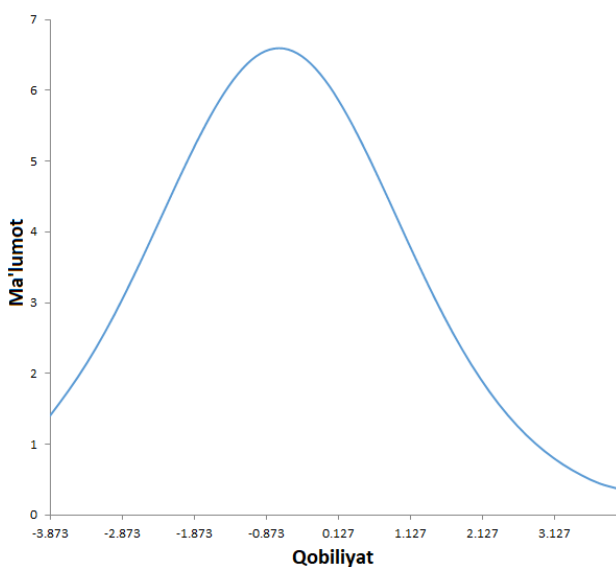
## *Tinglab tushunish bo'limi*



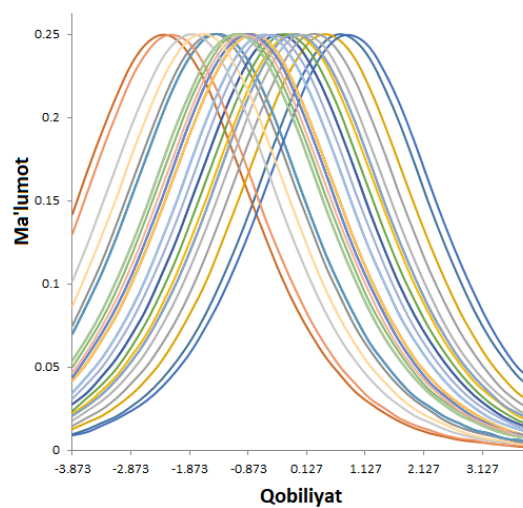
*Test xarakteristika chizig'i*



*Elementga javob funksiyasi chiziq-lari*

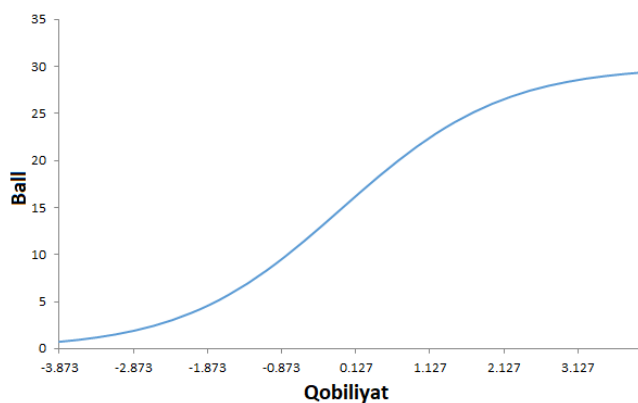


*Test ma'lumot chizig'i*

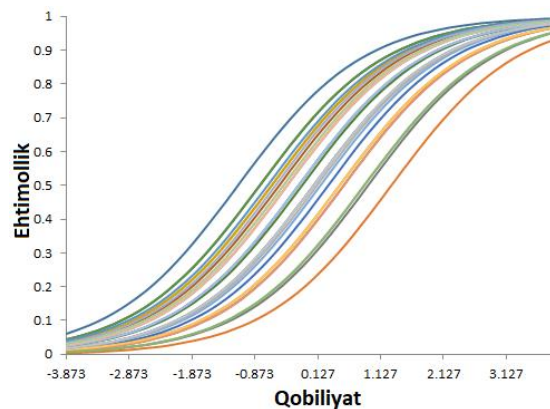


*Element ma'lumoti funksiyasi chiziq-lari*

## *O'qish bo'limi*

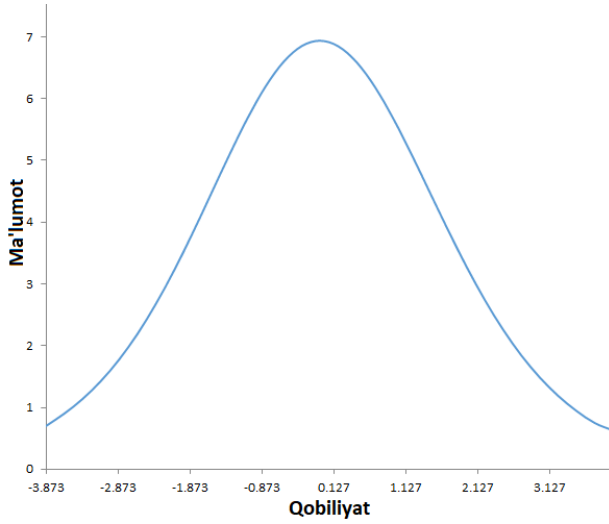


*Test xarakteristika chizig'i*

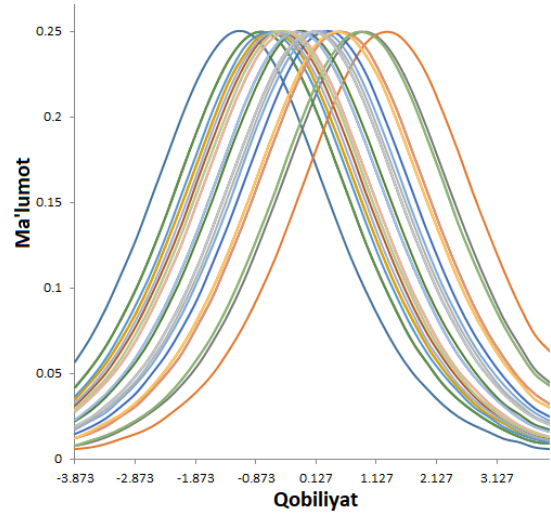


*Elementga javob funksiyasi chiziq-lari*



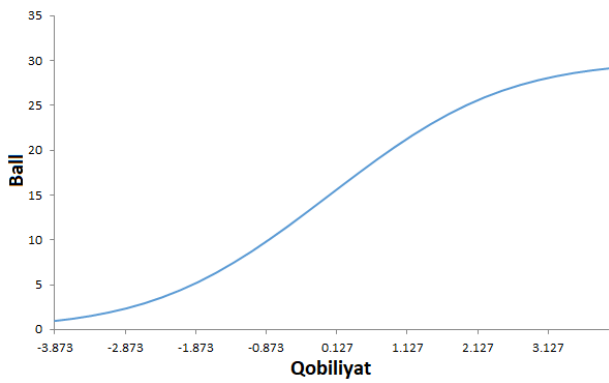


*Test ma'lumot chizig'i*

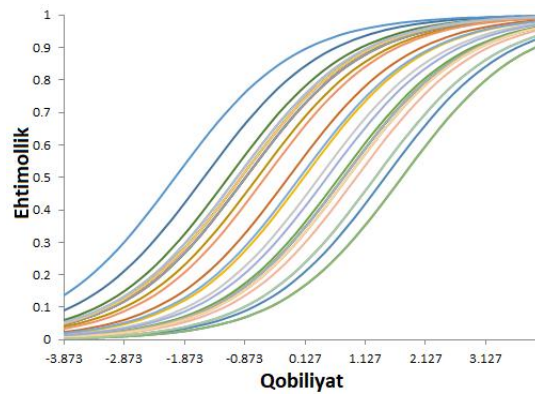


*Element ma'lumoti funksiyasi chiziq-lari*

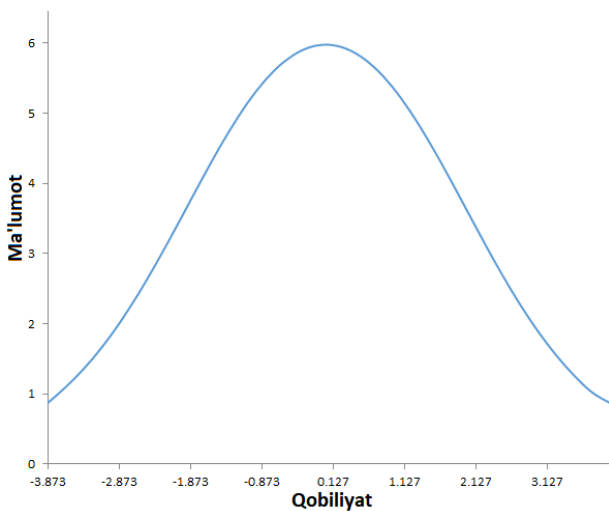
***Leksik va grammatik kompetensiyalar***



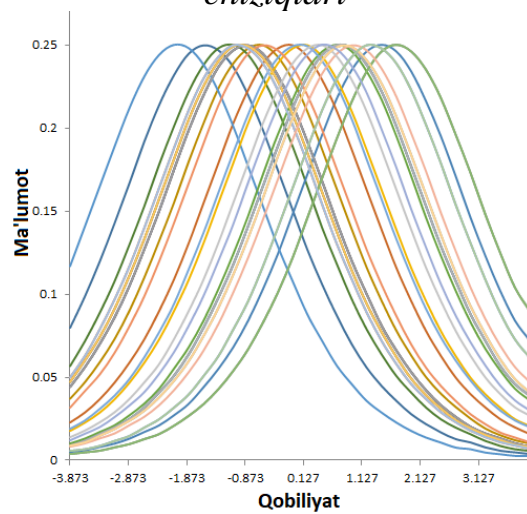
*Test xarakteristika chizig'i*



*Elementga javob funksiyasi chiziq-lari*



*Test ma'lumot chizig'i*



*Element ma'lumoti funksiyasi chiziq-lari*