

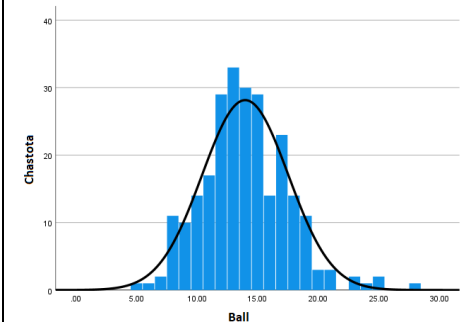
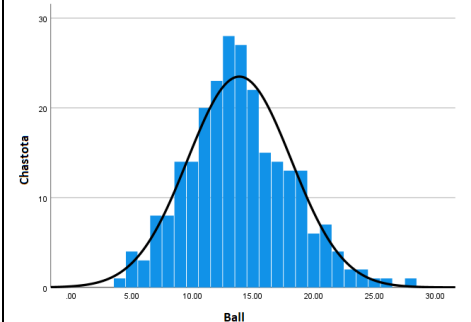
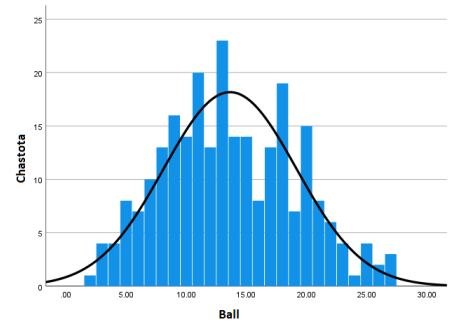
Fevral oyida o‘tkazilgan chet tilini bilish va egallash darajasini baholash test sinovi natijalarining statistik tahlili

Ingliz tilidan B2 darajasi uchun sinovlarida 251 nafar talabgor ishtirok etdi. Test sinovlarining tinglab tushunish, o‘qish va leksik-grammatik kompetensiyalar bo‘limlari klassik va zamonaviy test nazariyalari asosida statistik tahlil qilindi.

I. Test sinovlarining klassik test nazariyasi bo‘yicha tahlili

Test sinovi natijalarining tavsif statistikasi

Tinglab tushunish		O‘qish		Leksik va grammatik kompetensiyalar	
Qatnashchilar soni	251	Qatnashchilar soni	251	Qatnashchilar soni	251
O‘rtacha qiymat:	13,98	O‘rtacha qiymat:	13,88	O‘rtacha qiymat:	13,64
Mediana:	14	Mediana:	14	Mediana:	13
Moda:	13	Moda:	13	Moda:	13
Standart tafovut	3,56	Standart tafovut	4,26	Standart tafovut	5,51
Dispersiya	12,64	Dispersiya	18,171	Dispersiya	30,31
Asimmetriya	0,501	Asimmetriya	0,330	Asimmetriya	0,211
Eksess	0,971	Eksess	0,136	Eksess	-0,551
Diapazon	23	Diapazon	24	Diapazon	25
Minimal	5	Minimum	4	Minimum	2
Maksimal	28	Maksimum	28	Maksimum	27

Ishonchlilik tahlili

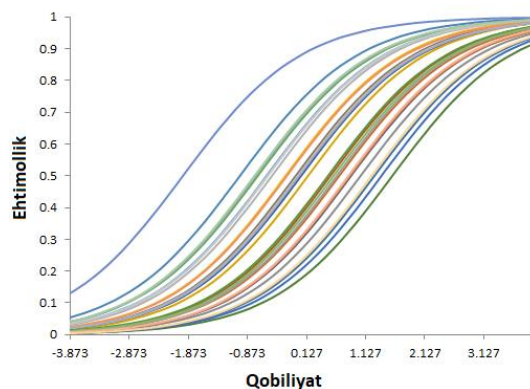
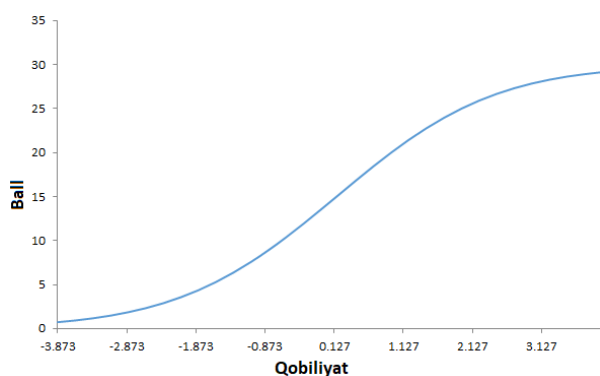
Bo‘lim	Kronbax alfasi	Standart xatolik
Tinglab tushunish	0,490	2,53
O‘qish	0,668	2,45
Leksik va grammatik kompetensiyalar	0,802	2,45
Umumiy	0,844	4,33

II. Test sinovlarining Rash modeli bo'yicha tahlili

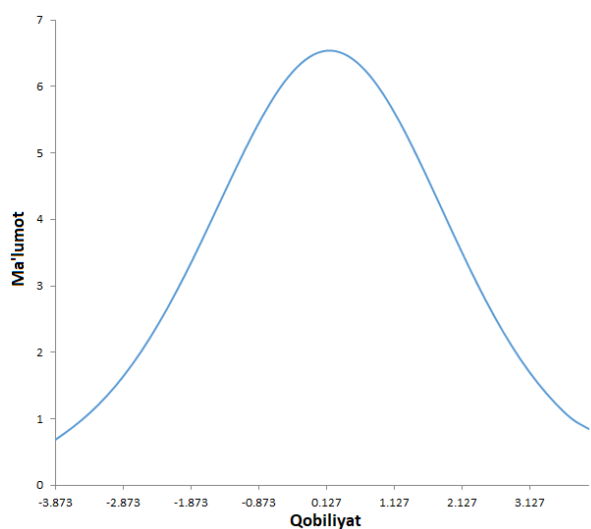
Rash modeli bo'yicha aniqlangan qiyinlik darajalari (b):

Tinglab tushunish				O'qish				Leksik va grammatik kompetensiyalar			
Item	(b)	Item	(b)	Item	(b)	Item	(b)	Item	(b)	Item	(b)
1	1.267	23	-1.960	1	0.582	30	-1.748	1	0.164	12	-1.399
2	0.528	7	-0.997	2	-0.091	23	-1.443	2	0.353	15	-1.002
3	-0.055	30	-0.756	3	1.254	26	-1.368	3	-0.610	23	-0.650
4	0.032	19	-0.737	4	0.249	29	-1.295	4	0.507	13	-0.630
5	0.874	18	-0.699	5	-0.325	28	-1.156	5	0.410	3	-0.610
6	1.575	13	-0.550	6	0.141	27	-0.603	6	0.686	8	-0.455
7	-0.997	25	-0.531	7	0.231	21	-0.584	7	0.788	19	-0.397
8	0.678	27	-0.531	8	0.582	24	-0.398	8	-0.455	10	-0.378
9	1.041	21	-0.459	9	0.601	5	-0.325	9	0.829	20	-0.227
10	0.154	16	-0.228	10	1.617	12	-0.307	10	-0.378	22	-0.097
11	0.032	20	-0.211	11	0.506	2	-0.091	11	0.546	16	-0.078
12	0.492	3	-0.055	12	-0.307	22	0.087	12	-1.399	30	0.015
13	-0.550	22	-0.020	13	0.213	6	0.141	13	-0.630	26	0.071
14	0.854	29	-0.003	14	1.278	13	0.213	14	1.769	1	0.164
15	0.640	11	0.032	15	0.432	7	0.231	15	-1.002	25	0.183
16	-0.228	4	0.032	16	1.049	4	0.249	16	-0.078	2	0.353
17	1.390	10	0.154	17	1.705	15	0.432	17	0.914	5	0.410
18	-0.699	12	0.492	18	0.659	11	0.506	18	0.706	21	0.430
19	-0.737	2	0.528	19	0.563	19	0.563	19	-0.397	4	0.507
20	-0.211	24	0.584	20	1.115	1	0.582	20	-0.227	11	0.546
21	-0.459	15	0.640	21	-0.584	8	0.582	21	0.430	28	0.566
22	-0.020	8	0.678	22	0.087	9	0.601	22	-0.097	27	0.645
23	-1.960	26	0.834	23	-1.443	18	0.659	23	-0.650	6	0.686
24	0.584	14	0.854	24	-0.398	16	1.049	24	0.788	18	0.706
25	-0.531	5	0.874	25	1.534	20	1.115	25	0.183	24	0.788
26	0.834	9	1.041	26	-1.368	3	1.254	26	0.071	7	0.788
27	-0.531	28	1.220	27	-0.603	14	1.278	27	0.645	9	0.829
28	1.220	1	1.267	28	-1.156	25	1.534	28	0.566	17	0.914
29	-0.003	17	1.390	29	-1.295	10	1.617	29	2.307	14	1.769
30	-0.756	6	1.575	30	-1.748	17	1.705	30	0.015	29	2.307

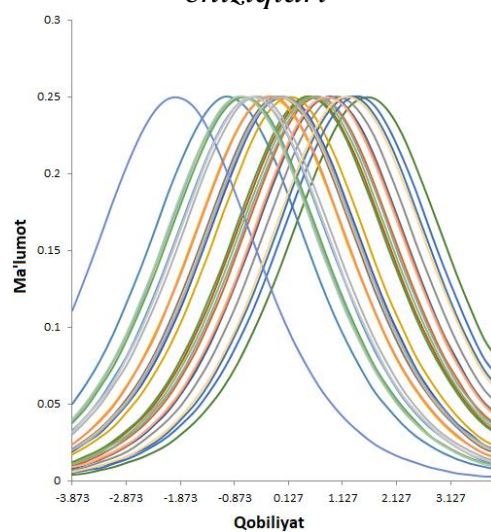
Tinglab tushunish bo'limi



Test xarakteristika chizig'i



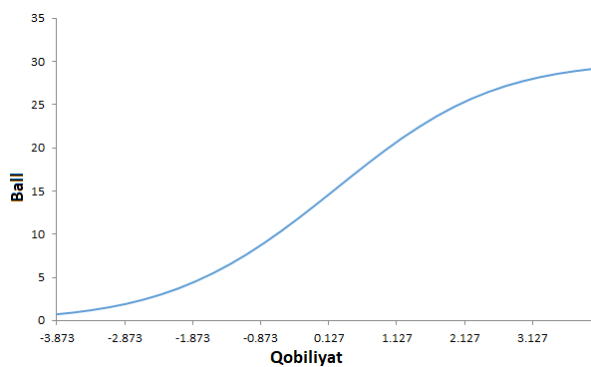
Elementga javob funksiyasi chiziqlari



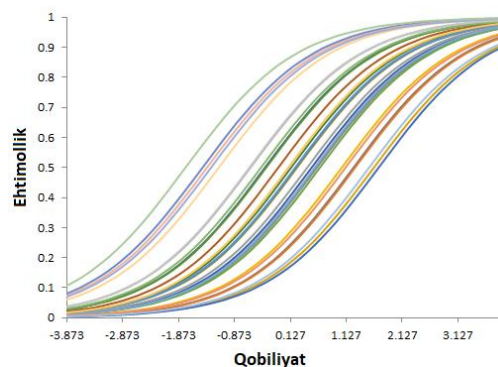
Test ma'lumot chizig'i

Element ma'lumoti funksiyasi chiziqlari

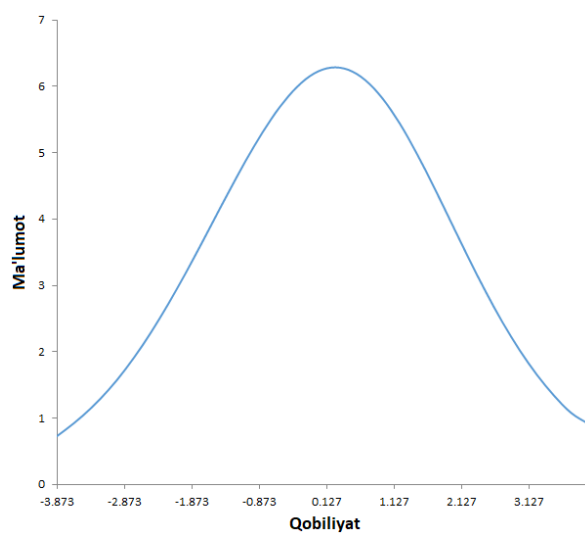
O'qish bo'limi



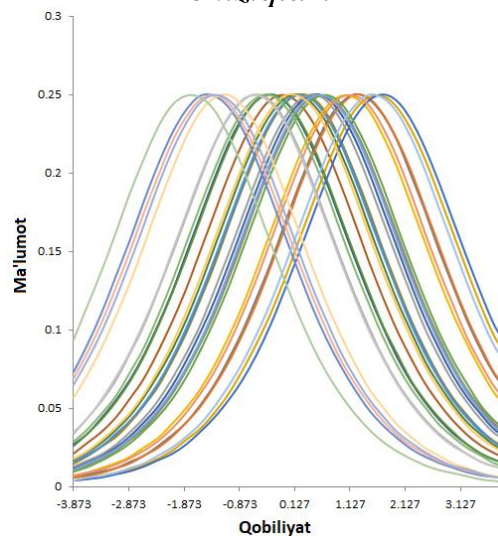
Test xarakteristika chizig'i



Elementga javob funksiyasi chiziqlari

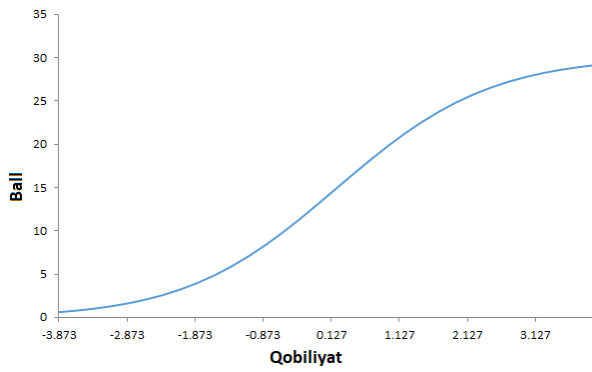


Test ma'lumot chizig'i

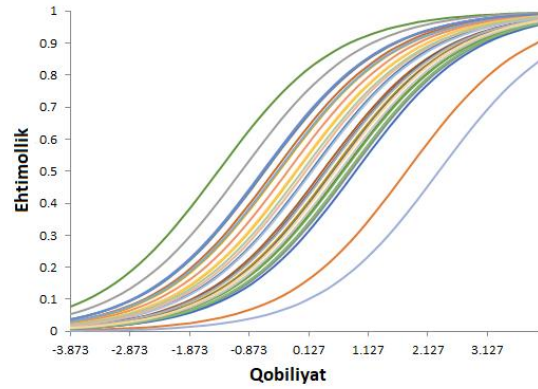


Element ma'lumoti funksiyasi chiziqlari

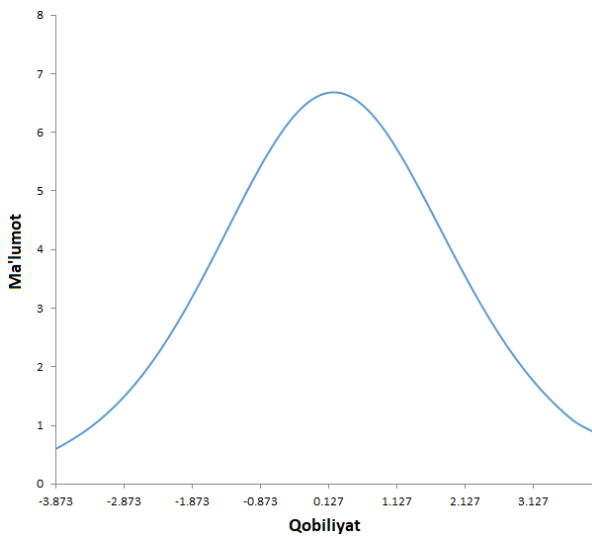
Leksik va grammatik kompetensiyalar bo'limi



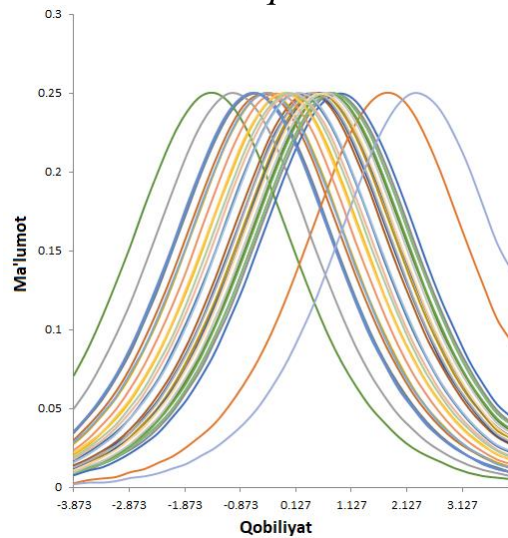
Test xarakteristika chizig'i



Elementga javob funksiyasi chiziqlari



Test ma'lumot chizig'i



Element ma'lumoti funksiyasi chiziqlari