

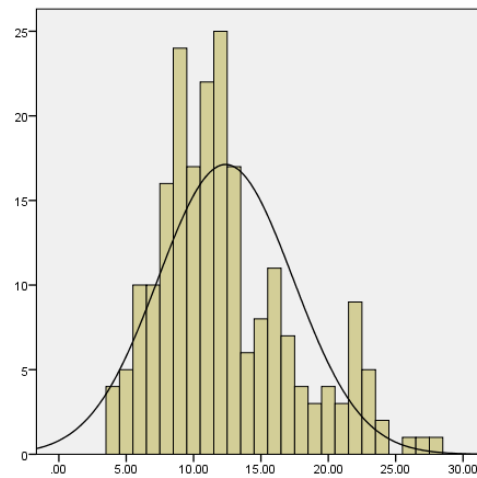
Dekabr oyida o'tkazilgan chet tilini bilish darajasini baholash test sinovlari natijalarining statistik tahlili

Ingliz tili / B2 daraja / 1-variant

Klassik test nazariyasi bo'yicha tavsif statistikasi

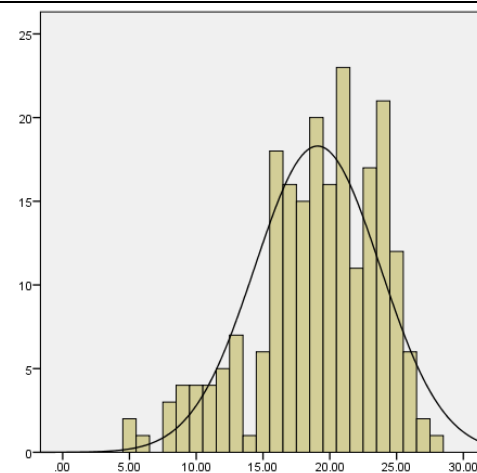
Tinglab tushunish

Qatnashchilar soni	215
O'rta qiymat	12,38
Mediana	11
Moda	12
Standart tafovut	5,01
Dispersiya	25,08
Asimmetriya	0,835
Ekssess	0,255
Diapazon	24
Minimal ball	4
Maksimal ball	28
Ishonchlilik (Kronbax alfasi)	0,752



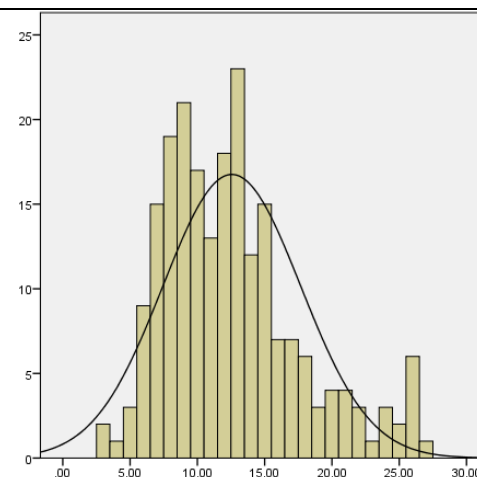
O'qish

Qatnashchilar soni	215
O'rta qiymat	19,08
Mediana	20
Moda	21
Standart tafovut	4,69
Dispersiya	21,97
Asimmetriya	-0,714
Ekssess	0,199
Diapazon	23
Minimal ball	5
Maksimal ball	28
Ishonchlilik (Kronbax alfasi)	0,757



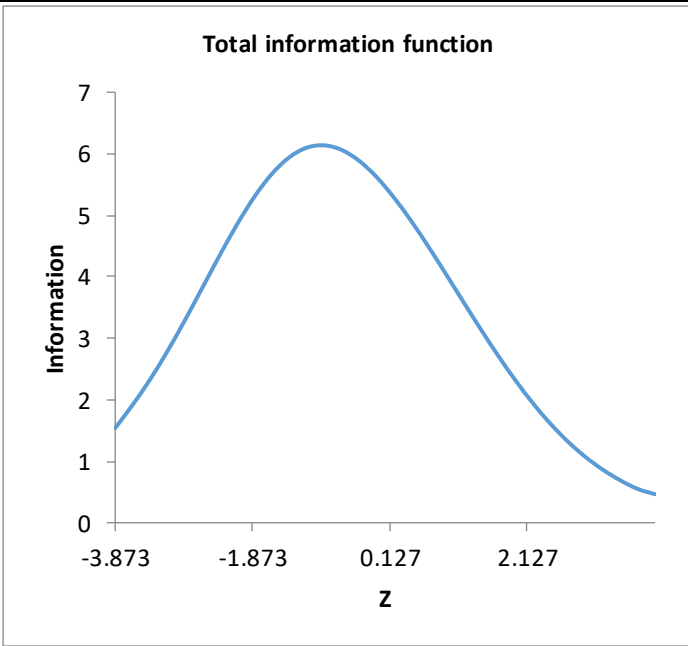
Leksik va grammatik kompetensiyalar

Qatnashchilar soni	215
O'rta qiymat	12,56
Mediana	12
Moda	13
Standart tafovut	5,12
Dispersiya	26,20
Asimmetriya	0,869
Ekssess	0,436
Diapazon	24
Minimal ball	3
Maksimal ball	27
Ishonchlilik (Kronbax alfasi)	0,770



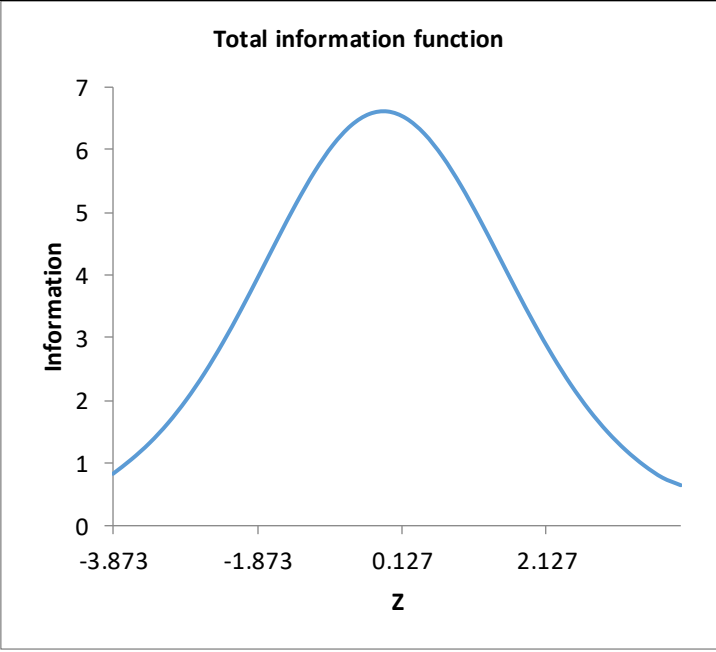
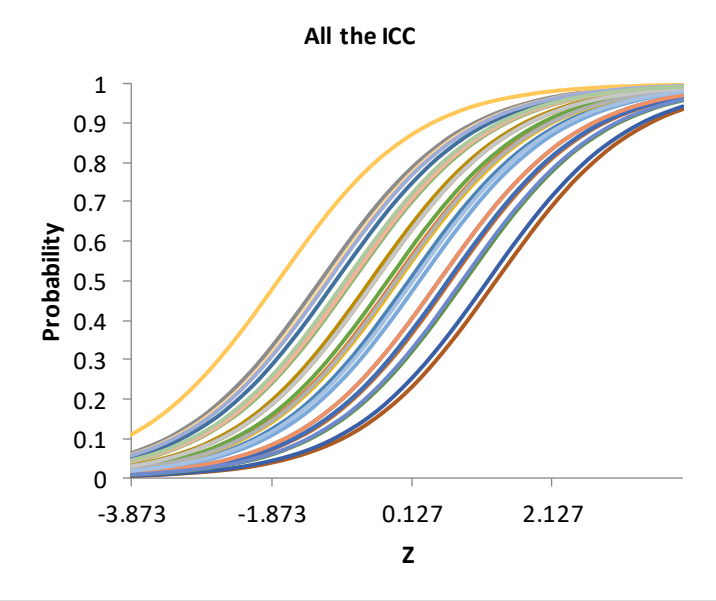
Rash metodi asosida test topshiriqlarining qiyinlik darajalari tahlili

Tinglab tushunish

Test topshirig'i	Qiyinlik darajasi (b)	Test ma'lumot chizig'i / Element xarakteristika chiziq'lari
ITEM17	-2.176	 <p>Total information function</p> <p>The graph shows a single blue bell-shaped curve representing the total information function. The y-axis is labeled 'Information' and ranges from 0 to 7. The x-axis is labeled 'z' and has tick marks at -3.873, -1.873, 0.127, and 2.127. The curve peaks at approximately z = -0.5 with an information value of about 6.2.</p>
ITEM30	-2.176	
ITEM29	-1.805	
ITEM2	-1.697	
ITEM12	-1.697	
ITEM23	-1.662	
ITEM27	-1.628	
ITEM24	-1.498	
ITEM16	-1.435	
ITEM21	-1.375	
ITEM28	-1.375	
ITEM20	-1.287	
ITEM26	-1.147	
ITEM18	-1.041	
ITEM11	-0.814	
ITEM14	-0.695	
ITEM13	-0.625	
ITEM25	-0.533	
ITEM22	-0.332	
ITEM7	-0.266	
ITEM4	-0.179	
ITEM19	0.014	
ITEM6	0.273	
ITEM8	0.273	
ITEM3	0.381	
ITEM9	1.032	
ITEM10	1.032	
ITEM1	1.161	
ITEM5	1.297	

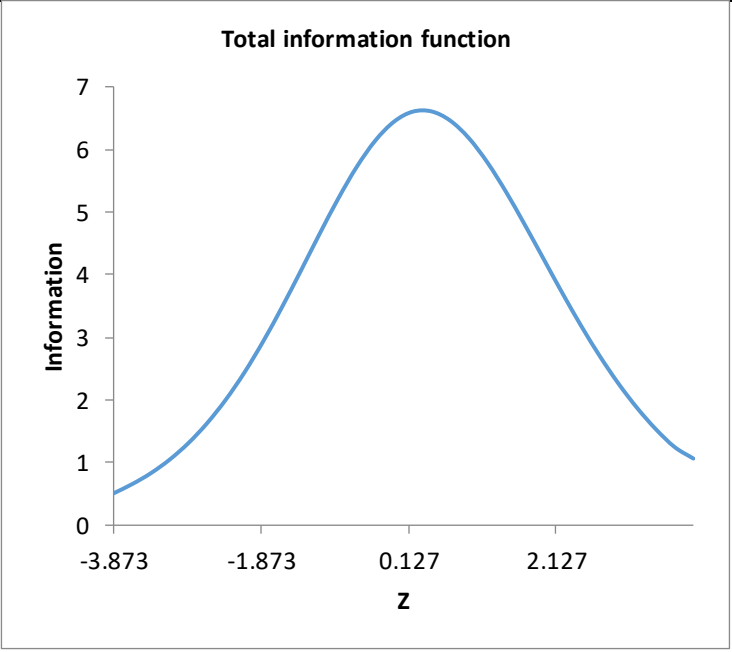
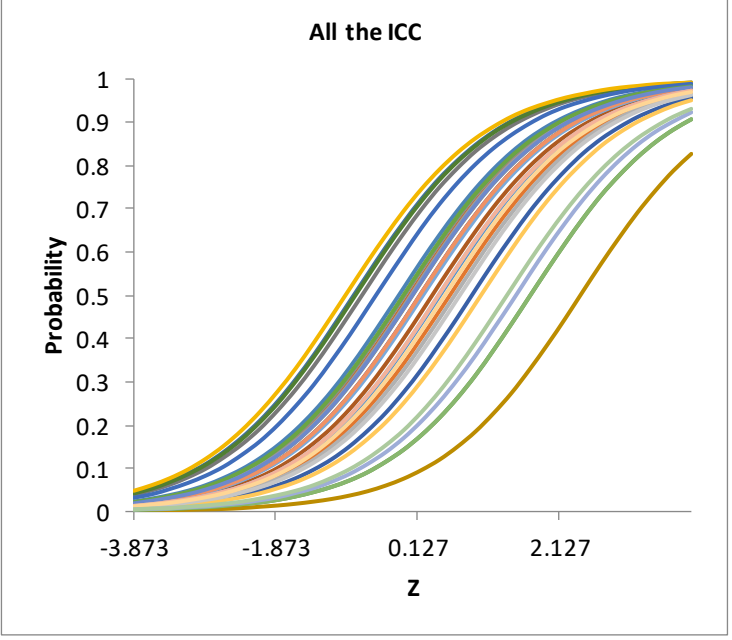
Rash metodi asosida test topshiriqlarining qiyinlik darajalari tahlili

O'qish

Test topshirig'i	Qiyinlik darajasi (b)	Test ma'lumot chizig'i / Element xarakteristika chiziq'lari
ITEM22	-1.777	 <p>Total information function</p> <p>The graph displays a single blue bell-shaped curve representing the total information function. The x-axis is labeled 'z' and ranges from -3.873 to 2.127. The y-axis is labeled 'Information' and ranges from 0 to 7. The curve peaks at z = 0.127 with an information value of approximately 6.5.</p>
ITEM9	-1.172	
ITEM28	-1.097	
ITEM29	-1.061	
ITEM1	-0.954	
ITEM30	-0.816	
ITEM3	-0.749	
ITEM26	-0.749	
ITEM24	-0.716	
ITEM4	-0.460	
ITEM5	-0.398	
ITEM10	-0.398	
ITEM27	-0.398	
ITEM18	-0.214	
ITEM14	-0.122	
ITEM15	-0.092	 <p>All the ICC</p> <p>The graph shows multiple sigmoid curves representing Item Characteristic Curves (ICCs) for various items. The x-axis is labeled 'z' and ranges from -3.873 to 2.127. The y-axis is labeled 'Probability' and ranges from 0 to 1. The curves are color-coded and shift to the right as the item difficulty increases.</p>
ITEM21	-0.092	
ITEM16	-0.062	
ITEM7	0.090	
ITEM25	0.150	
ITEM19	0.242	
ITEM13	0.522	
ITEM20	0.522	
ITEM17	0.651	
ITEM6	0.651	
ITEM8	0.684	
ITEM23	0.852	
ITEM12	0.887	
ITEM11	1.217	

Rash metodi asosida test topshiriqlarining qiyinlik darajalari tahlili

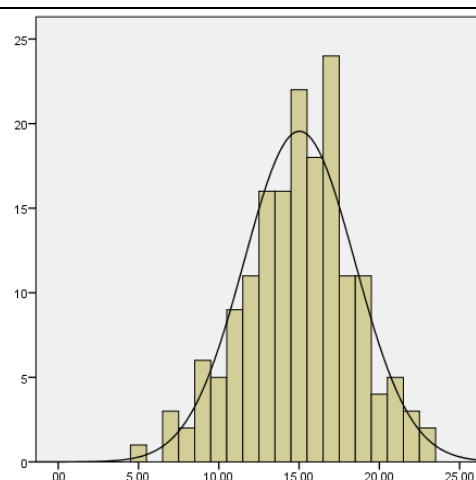
Leksik va grammatik kompetensiyalar

Test topshirig'i	Qiyinlik darajasi (b)	Test ma'lumot chizig'i / Element xarakteristika chiziq-lari	
ITEM16	-0.885	 <p>Total information function</p> <p>The graph shows a single blue bell-shaped curve representing the total information function. The y-axis is labeled 'Information' and ranges from 0 to 7. The x-axis is labeled 'z' and has tick marks at -3.873, -1.873, 0.127, and 2.127. The curve peaks at approximately 6.5 when z is 0.127.</p>	
ITEM1	-0.768		
ITEM6	-0.745		
ITEM3	-0.653		
ITEM17	-0.454		
ITEM7	-0.131		
ITEM18	-0.067		
ITEM9	-0.046		
ITEM8	0.018		
ITEM15	0.039		
ITEM10	0.061		
ITEM23	0.061		
ITEM5	0.168		
ITEM20	0.168		
ITEM19	0.211	 <p>All the ICC</p> <p>The graph displays multiple sigmoid curves representing Item Characteristic Curves (ICCs) for various items. The y-axis is labeled 'Probability' and ranges from 0 to 1. The x-axis is labeled 'z' and has tick marks at -3.873, -1.873, 0.127, and 2.127. The curves are colored in various shades (blue, green, orange, yellow) and shift to the right as the item difficulty increases.</p>	
ITEM2	0.342		
ITEM25	0.430		
ITEM26	0.430		
ITEM13	0.453		
ITEM28	0.520		
ITEM14	0.589		
ITEM21	0.659		
ITEM27	0.730		
ITEM11	0.901		
ITEM22	1.030		
ITEM30	1.397		
ITEM29	1.522		
ITEM24	1.728		
ITEM12	1.728		
ITEM4	2.433		

Klassik test nazariyasi bo'yicha tavsif statistikasi

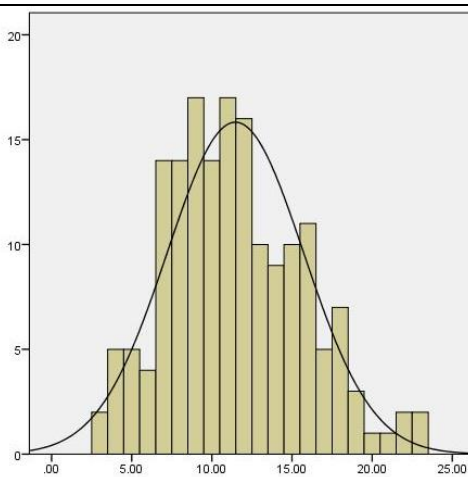
Tinglab tushunish

Qatnashchilar soni	169
O'рта qiymat	15,02
Mediana	15
Moda	17
Standart tafovut	3,45
Dispersiya	11,89
Asimmetriya	-0,214
Ekssess	0,002
Diapazon	18
Minimal ball	5
Maksimal ball	23
Ishonchlilik (Kronbax alfasi)	0,483



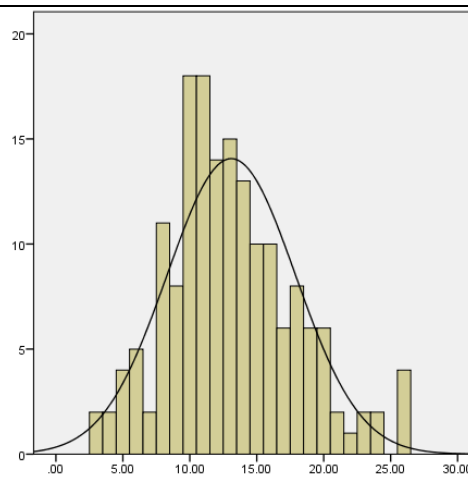
O'qish

Qatnashchilar soni	169
O'рта qiymat	11,47
Mediana	11
Moda	11
Standart tafovut	4,26
Dispersiya	18,13
Asimmetriya	0,405
Ekssess	-0,170
Diapazon	20
Minimal ball	3
Maksimal ball	23
Ishonchlilik (Kronbax alfasi)	0,672



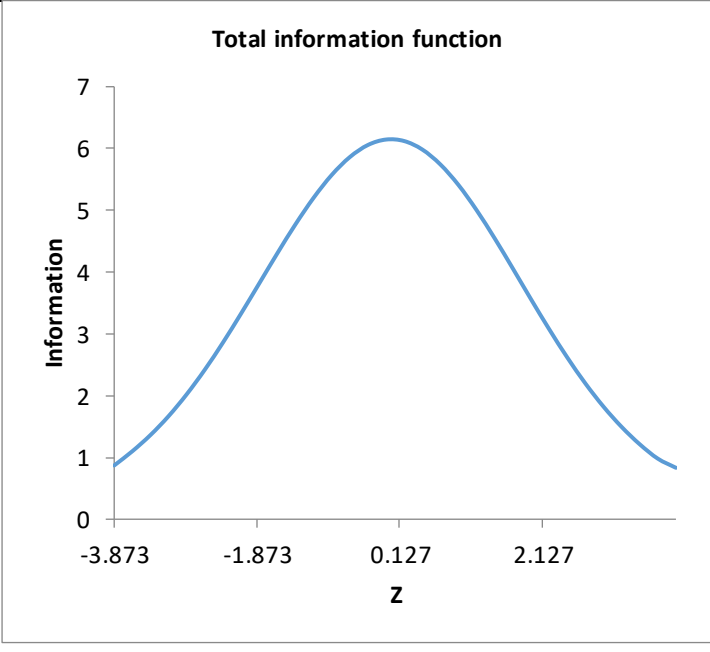
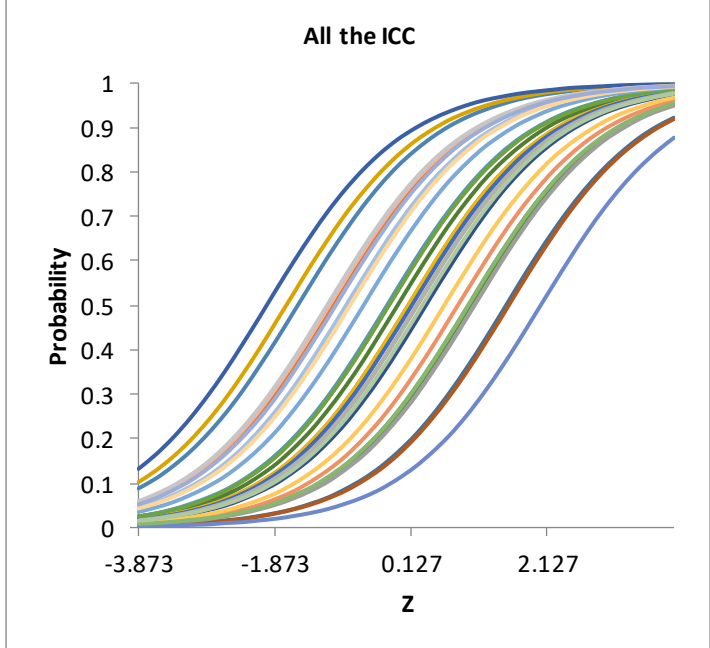
Leksik va grammatik kompetensiyalar

Qatnashchilar soni	169
O'рта qiymat	13,09
Mediana	13
Moda	11
Standart tafovut	4,79
Dispersiya	22,98
Asimmetriya	0,493
Ekssess	0,207
Diapazon	23
Minimal ball	3
Maksimal ball	26
Ishonchlilik (Kronbax alfasi)	0,756



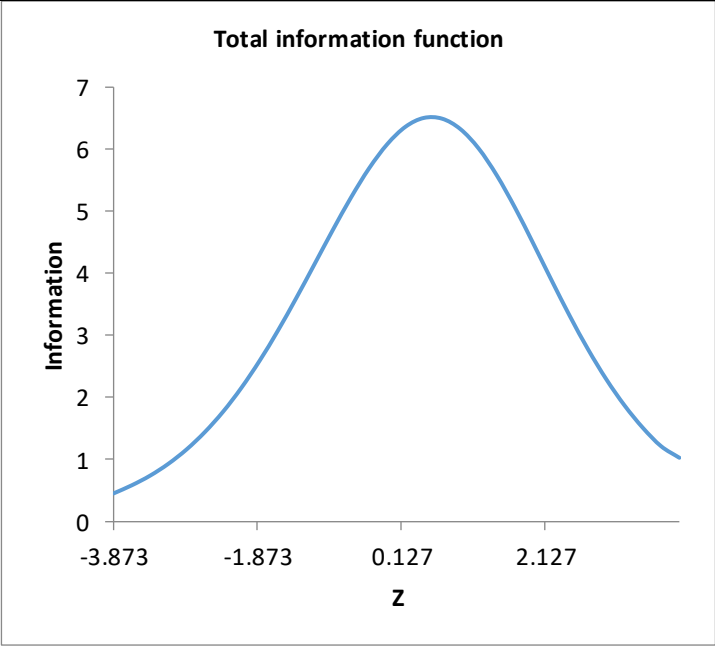
Rash metodi asosida test topshiriqlarining qiyinlik darajalari tahlili

Tinglab tushunish

Test topshirig'i	Qiyinlik darajasi (b)	Test ma'lumot chizig'i / Element xarakteristika chiziq'lari
ITEM11	-1.989	 <p>Total information function</p> <p>The graph shows a single blue bell-shaped curve representing the total information function. The y-axis is labeled 'Information' and ranges from 0 to 7. The x-axis is labeled 'z' and ranges from -3.873 to 2.127. The curve peaks at approximately 6.2 when z is 0.127.</p>
ITEM10	-1.699	
ITEM7	-1.531	
ITEM27	-1.100	
ITEM26	-1.067	
ITEM14	-1.004	
ITEM29	-0.972	
ITEM25	-0.821	
ITEM28	-0.763	
ITEM19	-0.565	
ITEM13	-0.218	
ITEM8	-0.192	
ITEM18	-0.192	
ITEM6	-0.062	 <p>All the ICC</p> <p>The graph displays multiple sigmoid curves representing the Item Characteristic Curves (ICC) for various items. The y-axis is labeled 'Probability' and ranges from 0 to 1. The x-axis is labeled 'z' and ranges from -3.873 to 2.127. Each curve represents a different item's probability of being answered correctly based on the test-taker's ability level.</p>
ITEM3	0.093	
ITEM16	0.093	
ITEM17	0.144	
ITEM21	0.222	
ITEM4	0.222	
ITEM30	0.301	
ITEM5	0.354	
ITEM22	0.624	
ITEM20	0.824	
ITEM9	0.975	
ITEM24	0.975	
ITEM12	1.006	
ITEM15	1.069	
ITEM1	1.531	
ITEM2	1.572	
ITEM23	2.040	

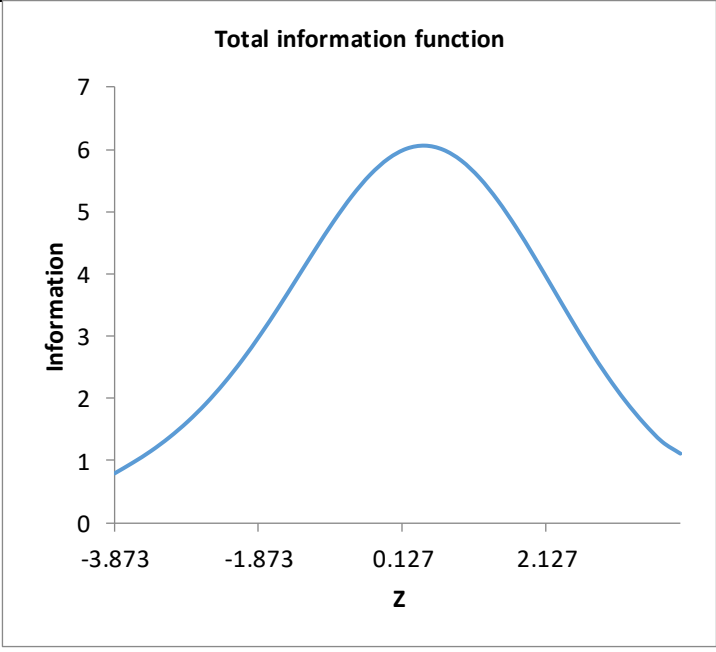
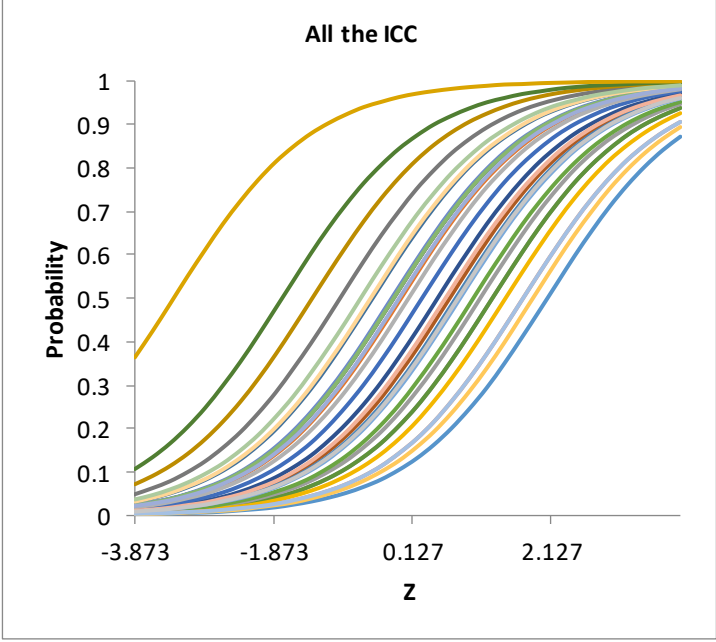
Rash metodi asosida test topshiriqlarining qiyinlik darajalari tahlili

O'qish

Test topshirig'i	Qiyinlik darajasi (b)	Test ma'lumot chizig'i / Element xarakteristika chiziq'lari
ITEM15	-1.287	 <p style="text-align: center;">Total information function</p>
ITEM16	-0.895	
ITEM1	-0.519	
ITEM28	-0.436	
ITEM10	-0.327	
ITEM22	-0.220	
ITEM18	-0.034	
ITEM11	0.046	
ITEM21	0.126	
ITEM5	0.126	
ITEM9	0.423	
ITEM23	0.478	
ITEM6	0.506	
ITEM3	0.562	
ITEM26	0.619	
ITEM17	0.648	
ITEM27	0.735	
ITEM24	0.795	
ITEM20	0.886	
ITEM8	0.917	
ITEM7	1.044	
ITEM2	1.077	
ITEM19	1.110	
ITEM25	1.110	
ITEM29	1.110	
ITEM14	1.247	
ITEM13	1.283	
ITEM12	1.432	
ITEM4	1.471	

Rash metodi asosida test topshiriqlarining qiyinlik darajalari tahlili

Leksik va grammatik kompetensiyalar

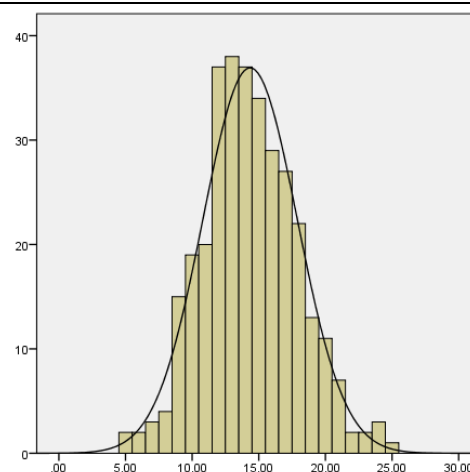
Test topshirig'i	Qiyinlik darajasi (b)	Test ma'lumot chizig'i / Element xarakteristika chiziq-lari	
ITEM10	-3.315	 <p style="text-align: center;">Total information function</p>	
ITEM6	-1.749		
ITEM4	-1.312		
ITEM3	-0.913		
ITEM30	-0.614		
ITEM28	-0.472		
ITEM1	-0.443		
ITEM23	-0.167		
ITEM8	-0.140		
ITEM11	-0.140		
ITEM24	-0.140		
ITEM29	-0.058		
ITEM14	-0.031		
ITEM21	0.078		
ITEM17	0.270		
ITEM5	0.495	 <p style="text-align: center;">All the ICC</p>	
ITEM26	0.611		
ITEM2	0.670		
ITEM7	0.760		
ITEM27	0.790		
ITEM19	0.821		
ITEM18	1.011		
ITEM15	1.112		
ITEM9	1.287		
ITEM12	1.287		
ITEM16	1.477		
ITEM20	1.731		
ITEM25	1.731		
ITEM22	1.872		
ITEM13	2.080		

Ingliz tili / C1 daraja / 1-variant

Klassik test nazariyasi bo'yicha tavsif statistikasi

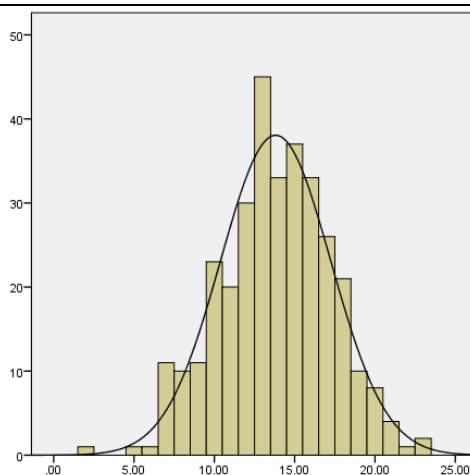
Tinglab tushunish

Qatnashchilar soni	328
O'рта qiymat	14,35
Mediana	14
Moda	13
Standart tafovut	3,54
Dispersiya	12,56
Asimmetriya	0,206
Ekssess	0,064
Diapazon	20
Minimal ball	5
Maksimal ball	25
Ishonchlilik (Kronbax alfasi)	0,466



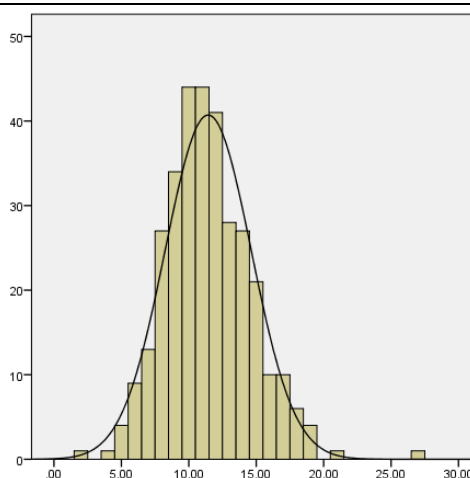
O'qish

Qatnashchilar soni	328
O'рта qiymat	13,81
Mediana	14
Moda	13
Standart tafovut	3,44
Dispersiya	18,13
Asimmetriya	-0,133
Ekssess	-0,014
Diapazon	21
Minimal ball	2
Maksimal ball	23
Ishonchlilik (Kronbax alfasi)	0,553



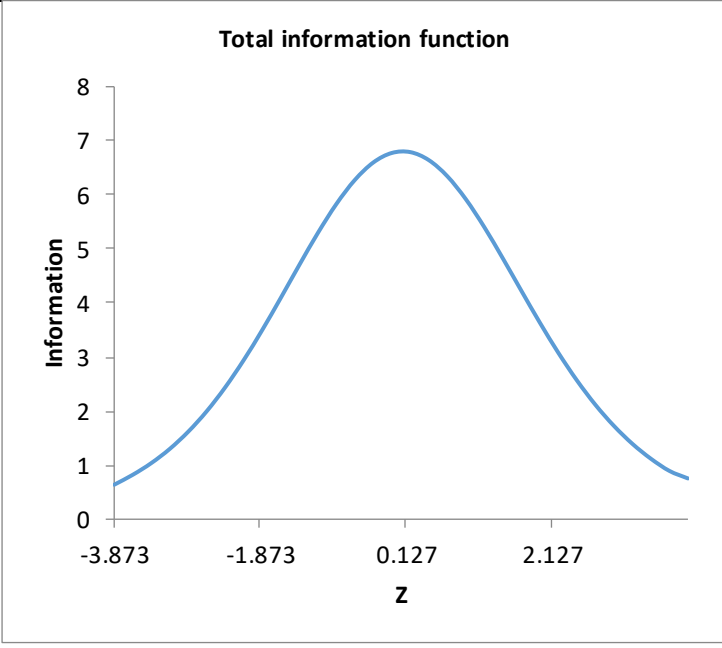
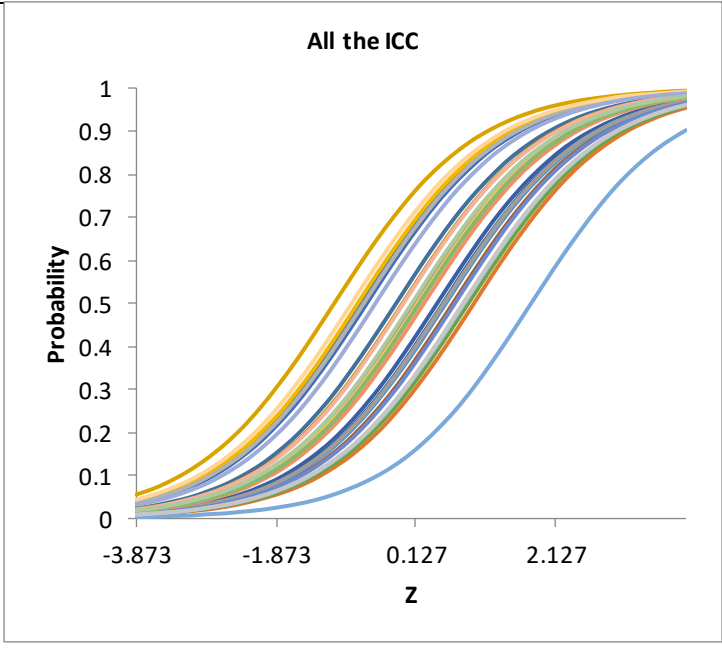
Leksik va grammatik kompetensiyalar

Qatnashchilar soni	326
O'рта qiymat	11,44
Mediana	11
Moda	11
Standart tafovut	3,19
Dispersiya	10,20
Asimmetriya	0,537
Ekssess	1,362
Diapazon	25
Minimal ball	2
Maksimal ball	27
Ishonchlilik (Kronbax alfasi)	0,388



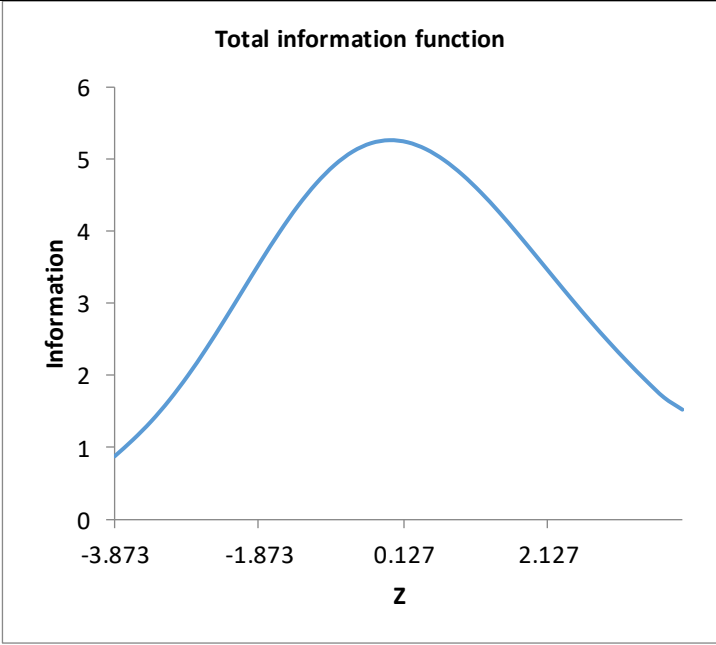
Rash metodi asosida test topshiriqlarining qiyinlik darajalari tahlili

Tinglab tushunish

Test topshirig'i	Qiyinlik darajasi (b)	Test ma'lumot chizig'i / Element xarakteristika chiziq-lari
ITEM10	-1.039	 <p>Total information function</p> <p>The graph shows a single blue bell-shaped curve representing the total information function. The y-axis is labeled 'Information' and ranges from 0 to 8. The x-axis is labeled 'z' and has tick marks at -3.873, -1.873, 0.127, and 2.127. The curve peaks at approximately 6.8 when z is 0.127.</p>
ITEM28	-0.790	
ITEM16	-0.702	
ITEM3	-0.659	
ITEM6	-0.630	
ITEM7	-0.630	
ITEM21	-0.616	
ITEM8	-0.602	
ITEM17	-0.573	
ITEM29	-0.448	
ITEM1	-0.152	
ITEM4	-0.059	
ITEM26	-0.046	
ITEM30	0.073	
ITEM9	0.099	 <p>All the ICC</p> <p>The graph displays multiple sigmoid curves representing Item Characteristic Curves (ICCs) for various items. The y-axis is labeled 'Probability' and ranges from 0 to 1. The x-axis is labeled 'z' and has tick marks at -3.873, -1.873, 0.127, and 2.127. The curves are colored in various shades (blue, green, yellow, orange, red) and shift to the right as the item difficulty increases.</p>
ITEM22	0.153	
ITEM24	0.179	
ITEM20	0.246	
ITEM11	0.436	
ITEM5	0.519	
ITEM12	0.533	
ITEM15	0.533	
ITEM13	0.561	
ITEM2	0.661	
ITEM23	0.690	
ITEM27	0.808	
ITEM25	0.823	
ITEM18	0.885	
ITEM14	0.963	
ITEM19	1.784	

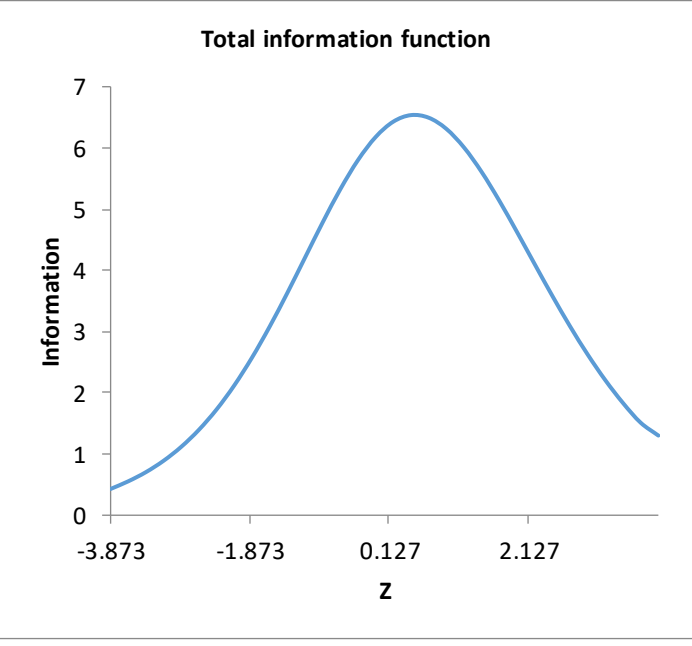
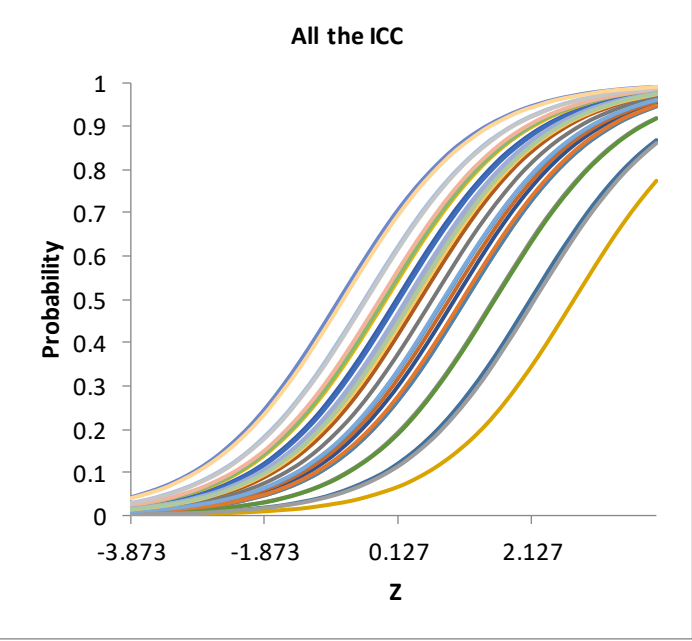
Rash metodi asosida test topshiriqlarining qiyinlik darajalari tahlili

O'qish

Test topshirig'i	Qiyinlik darajasi (b)	Test ma'lumot chizig'i / Element xarakteristika chiziq'lari
ITEM8	-1.882	 <p>Total information function</p> <p>The graph displays a single blue curve representing the total information function. The x-axis is labeled 'z' and ranges from -3.873 to 2.127. The y-axis is labeled 'Information' and ranges from 0 to 6. The curve starts at approximately (z=-3.873, Information=1.0), rises to a peak of about 5.3 at z=0.127, and then gradually declines to about 1.5 at z=2.127.</p>
ITEM7	-1.669	
ITEM27	-1.582	
ITEM22	-1.541	
ITEM30	-1.401	
ITEM5	-1.325	
ITEM1	-1.028	
ITEM10	-0.979	
ITEM28	-0.512	
ITEM29	-0.512	
ITEM25	-0.303	
ITEM23	-0.261	
ITEM3	-0.248	
ITEM2	0.214	
ITEM4	0.256	
ITEM6	0.422	
ITEM24	0.563	
ITEM21	0.709	
ITEM20	0.908	
ITEM11	1.138	
ITEM26	1.354	
ITEM14	1.704	
ITEM13	1.727	
ITEM16	1.774	
ITEM15	2.086	
ITEM12	3.115	
ITEM19	3.324	
ITEM18	3.790	

Rash metodi asosida test topshiriqlarining qiyinlik darajalari tahlili

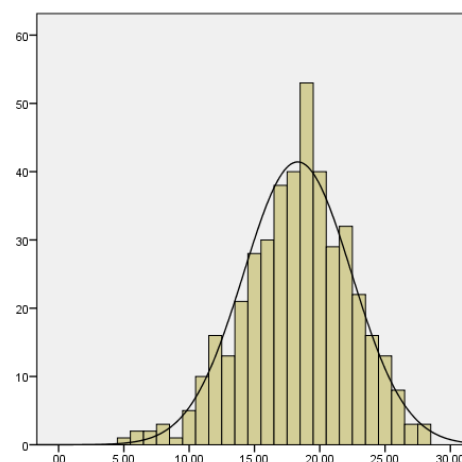
Leksik va grammatik kompetensiyalar

Test topshirig'i	Qiyinlik darajasi (b)	Test ma'lumot chizig'i / Element xarakteristika chiziq'lari
ITEM23	-0.748	 <p>Total information function</p> <p>The graph shows a single blue bell-shaped curve representing the total information function. The y-axis is labeled 'Information' and ranges from 0 to 7. The x-axis is labeled 'z' and ranges from -3.873 to 2.127. The curve peaks at approximately z = 0.127 with an information value of about 6.5.</p>
ITEM28	-0.690	
ITEM25	-0.369	
ITEM27	-0.342	
ITEM26	-0.141	
ITEM24	-0.075	
ITEM6	-0.061	
ITEM16	-0.048	
ITEM11	0.111	
ITEM17	0.151	
ITEM29	0.258	
ITEM21	0.312	
ITEM18	0.312	
ITEM20	0.312	
ITEM30	0.352	 <p>All the ICC</p> <p>The graph displays multiple sigmoid curves representing Item Characteristic Curves (ICCs) for various items. The y-axis is labeled 'Probability' and ranges from 0 to 1. The x-axis is labeled 'z' and ranges from -3.873 to 2.127. The curves are colored in various shades (blue, green, orange, yellow) and shift to the right as the item difficulty increases.</p>
ITEM22	0.393	
ITEM2	0.462	
ITEM3	0.646	
ITEM19	0.808	
ITEM13	0.823	
ITEM8	0.901	
ITEM5	0.980	
ITEM14	1.095	
ITEM4	1.146	
ITEM7	1.146	
ITEM9	1.565	
ITEM12	1.586	
ITEM1	2.118	
ITEM15	2.180	
ITEM10	2.771	

Klassik test nazariyasi bo'yicha tavsif statistikasi

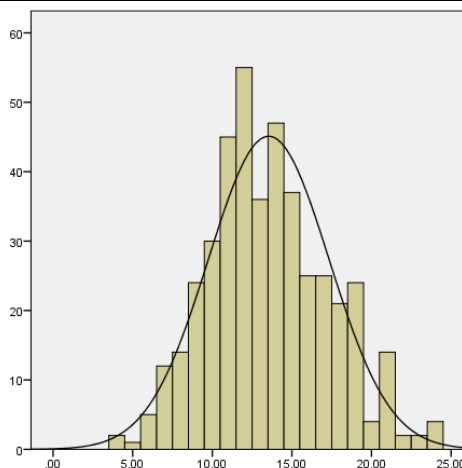
Tinglab tushunish

Qatnashchilar soni	429
O'рта qiymat	18,31
Mediana	19
Moda	19
Standart tafovut	4,13
Dispersiya	17,06
Asimmetriya	-0,301
Ekssess	0,118
Diapazon	23
Minimal ball	5
Maksimal ball	28
Ishonchlilik (Kronbax alfasi)	0,660



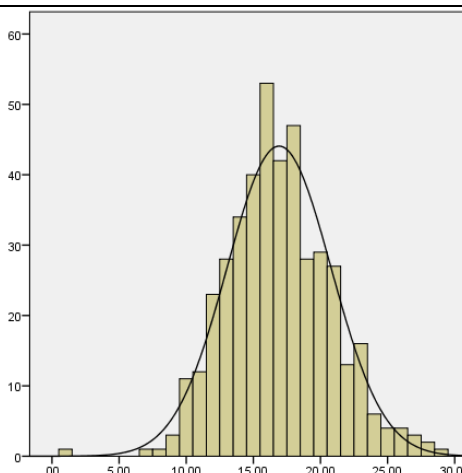
O'qish

Qatnashchilar soni	429
O'рта qiymat	13,54
Mediana	13
Moda	12
Standart tafovut	3,79
Dispersiya	14,40
Asimmetriya	0,294
Ekssess	-0,176
Diapazon	20
Minimal ball	4
Maksimal ball	24
Ishonchlilik (Kronbax alfasi)	0,623



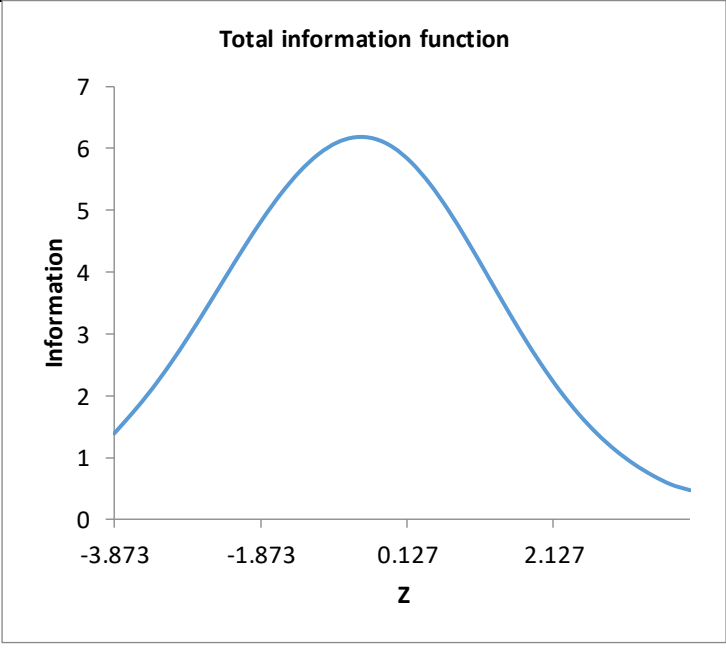
Leksik va grammatik kompetensiyalar

Qatnashchilar soni	429
O'рта qiymat	16,91
Mediana	17
Moda	16
Standart tafovut	3,88
Dispersiya	15,07
Asimmetriya	0,171
Ekssess	0,505
Diapazon	28
Minimal ball	1
Maksimal ball	29
Ishonchlilik (Kronbax alfasi)	0,571



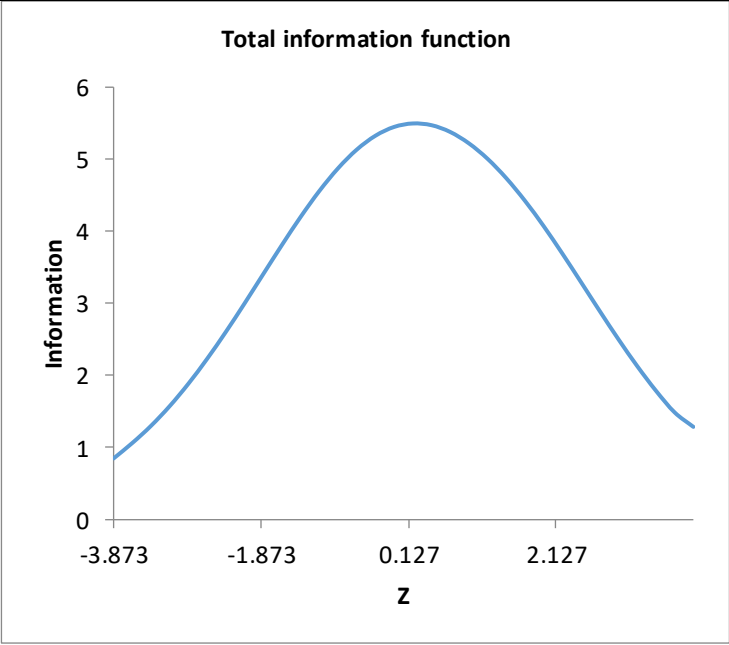
Rash metodi asosida test topshiriqlarining qiyinlik darajalari tahlili

Tinglab tushunish

Test topshirig'i	Qiyinlik darajasi (b)	Test ma'lumot chizig'i / Element xarakteristika chiziq-lari
ITEM3	-2.230	 <p>Total information function</p> <p>The graph shows a single blue bell-shaped curve representing the total information function. The y-axis is labeled 'Information' and ranges from 0 to 7. The x-axis is labeled 'z' and ranges from -3.873 to 2.127. The curve peaks at approximately z = -0.5 with an information value of about 6.2.</p>
ITEM17	-2.090	
ITEM9	-2.025	
ITEM19	-1.983	
ITEM12	-1.806	
ITEM15	-1.752	
ITEM18	-1.453	
ITEM7	-1.393	
ITEM11	-1.249	
ITEM27	-1.194	
ITEM28	-1.062	
ITEM5	-1.049	
ITEM21	-0.464	
ITEM8	-0.367	
ITEM10	-0.367	
ITEM4	-0.196	
ITEM25	-0.175	
ITEM24	-0.165	
ITEM2	-0.144	
ITEM29	-0.133	
ITEM1	-0.060	
ITEM30	-0.060	
ITEM16	-0.029	
ITEM13	0.212	
ITEM26	0.308	
ITEM14	0.372	
ITEM22	0.656	
ITEM23	0.782	
ITEM20	0.900	
ITEM6	1.074	

Rash metodi asosida test topshiriqlarining qiyinlik darajalari tahlili

O'qish

Test topshirig'i	Qiyinlik darajasi (b)	Test ma'lumot chizig'i / Element xarakteristika chiziq'lari
ITEM10	-2.458	 <p>Total information function</p> <p>The graph shows a single blue bell-shaped curve representing the total information function. The y-axis is labeled 'Information' and ranges from 0 to 6. The x-axis is labeled 'z' and has tick marks at -3.873, -1.873, 0.127, and 2.127. The curve peaks at approximately 5.5 when z is 0.127.</p>
ITEM2	-1.685	
ITEM7	-1.492	
ITEM22	-1.402	
ITEM30	-1.232	
ITEM5	-1.023	
ITEM27	-0.736	
ITEM6	-0.579	
ITEM21	-0.568	
ITEM9	-0.535	
ITEM1	-0.245	
ITEM24	-0.224	
ITEM3	-0.214	
ITEM4	0.058	
ITEM11	0.131	
ITEM25	0.375	
ITEM23	0.451	
ITEM28	0.451	
ITEM8	0.583	
ITEM16	0.707	
ITEM29	0.848	
ITEM18	1.494	
ITEM17	1.557	
ITEM20	1.590	
ITEM13	1.639	
ITEM12	1.761	
ITEM15	1.873	
ITEM26	2.035	
ITEM14	2.316	
ITEM19	2.666	

Rash metodi asosida test topshiriqlarining qiyinlik darajalari tahlili

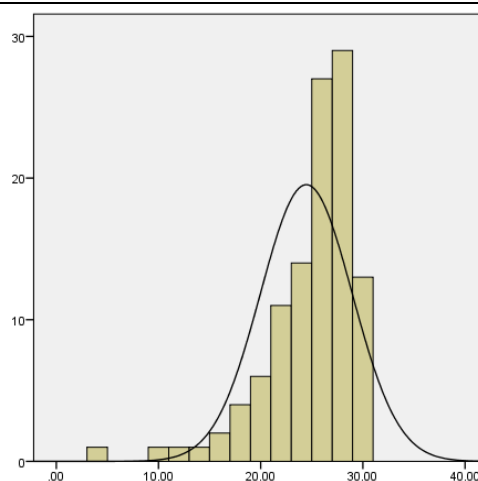
Leksik va grammatik kompetensiyalar

Test topshirig'i	Qiyinlik darajasi (b)	Test ma'lumot chizig'i / Element xarakteristika chiziq-lari
ITEM2	-2.401	<p>Total information function</p> <p>The graph displays a single blue bell-shaped curve representing the total information function. The x-axis is labeled 'z' and has tick marks at -3.873, -1.873, 0.127, and 2.127. The y-axis is labeled 'Information' and ranges from 0 to 8. The curve starts at approximately (z=-3.873, Information=1), reaches its maximum of about 6.5 at z=0.127, and ends at approximately (z=3.873, Information=0.5).</p>
ITEM24	-1.372	
ITEM7	-1.328	
ITEM23	-1.286	
ITEM25	-1.231	
ITEM8	-0.997	
ITEM26	-0.818	
ITEM12	-0.818	
ITEM22	-0.703	
ITEM16	-0.581	
ITEM19	-0.506	
ITEM14	-0.431	
ITEM15	-0.263	
ITEM11	-0.232	
ITEM20	-0.201	<p>All the ICC</p> <p>The graph shows multiple sigmoidal curves (Item Characteristic Curves) for different test items. The x-axis is labeled 'z' and has tick marks at -3.873, -1.873, 0.127, and 2.127. The y-axis is labeled 'Probability' and ranges from 0 to 1. Each curve represents the probability of a correct response for a specific item as a function of the examinee's ability level (z). The curves are shifted horizontally according to their difficulty levels, with more difficult items (negative b) shifted to the left and easier items (positive b) shifted to the right.</p>
ITEM28	-0.160	
ITEM9	-0.067	
ITEM10	0.004	
ITEM30	0.025	
ITEM4	0.025	
ITEM27	0.035	
ITEM21	0.127	
ITEM5	0.303	
ITEM13	0.314	
ITEM17	0.345	
ITEM18	0.376	
ITEM29	0.419	
ITEM1	0.429	
ITEM6	0.451	
ITEM3	1.230	

Klassik test nazariyasi bo'yicha tavsif statistikasi

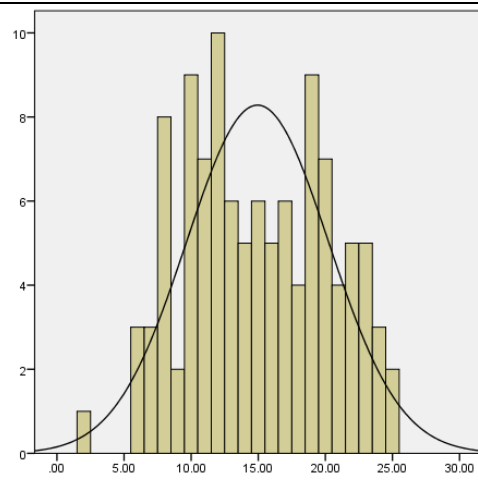
Tinglab tushunish

Qatnashchilar soni	110
O'рта qiymat	24,46
Mediana	25,50
Moda	28
Standart tafovut	4,49
Dispersiya	20,18
Asimmetriya	-1,718
Ekssess	0,230
Diapazon	26
Minimal ball	4
Maksimal ball	30
Ishonchlilik (Kronbax alfasi)	0,825



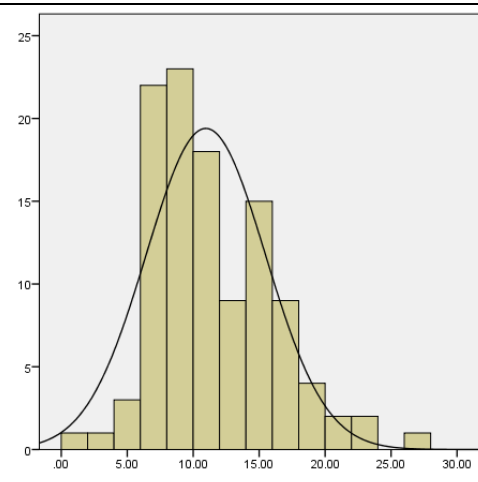
O'qish

Qatnashchilar soni	110
O'рта qiymat	14,95
Mediana	15
Moda	12
Standart tafovut	5,30
Dispersiya	28,07
Asimmetriya	0,028
Ekssess	-0,930
Diapazon	23
Minimal ball	2
Maksimal ball	25
Ishonchlilik (Kronbax alfasi)	0,796



Leksik va grammatik kompetensiyalar

Qatnashchilar soni	110
O'рта qiymat	10,95
Mediana	10
Moda	9
Standart tafovut	4,52
Dispersiya	20,47
Asimmetriya	0,717
Ekssess	0,431
Diapazon	25
Minimal ball	1
Maksimal ball	26
Ishonchlilik (Kronbax alfasi)	0,697



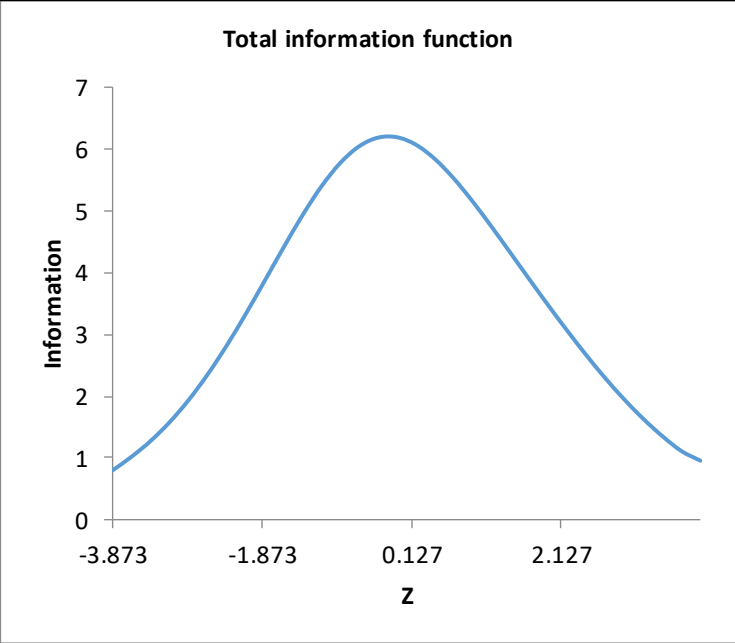
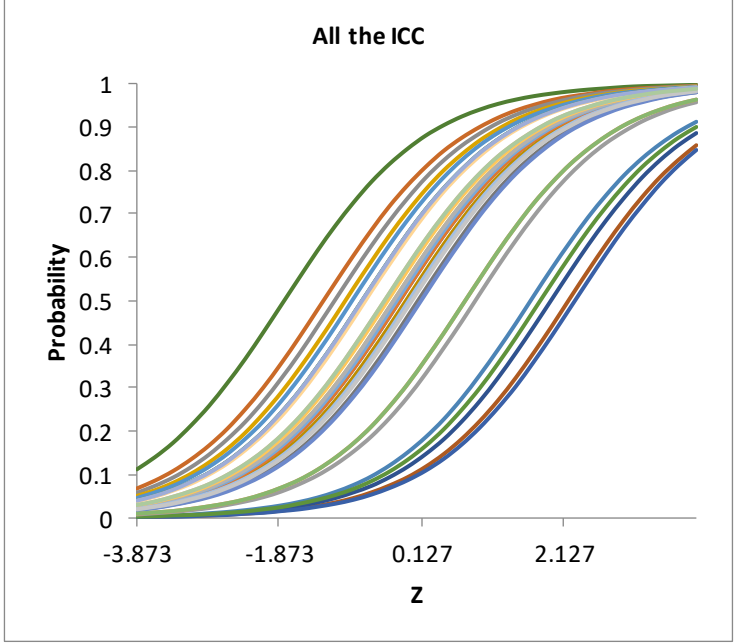
Rash metodi asosida test topshiriqlarining qiyinlik darajalari tahlili

Tinglab tushunish

Test topshirig'i	Qiyinlik darajasi (b)	Test ma'lumot chizig'i / Element xarakteristika chiziq-lari
ITEM27	-3.528	<p style="text-align: center;">Total information function</p> <p style="text-align: center;">Information</p> <p style="text-align: center;">z</p>
ITEM30	-3.528	
ITEM26	-3.317	
ITEM1	-3.317	
ITEM24	-3.135	
ITEM18	-3.135	
ITEM25	-3.135	
ITEM23	-2.975	
ITEM17	-2.975	
ITEM28	-2.700	
ITEM2	-2.581	
ITEM13	-2.469	
ITEM19	-2.089	
ITEM22	-1.927	
ITEM29	-1.927	<p style="text-align: center;">All the ICC</p> <p style="text-align: center;">Probability</p> <p style="text-align: center;">z</p>
ITEM6	-1.851	
ITEM3	-1.777	
ITEM16	-1.777	
ITEM14	-1.572	
ITEM7	-1.508	
ITEM9	-1.446	
ITEM21	-1.446	
ITEM5	-1.385	
ITEM10	-1.385	
ITEM11	-0.996	
ITEM15	-0.944	
ITEM4	-0.555	
ITEM8	-0.417	
ITEM20	-0.327	
ITEM12	0.072	

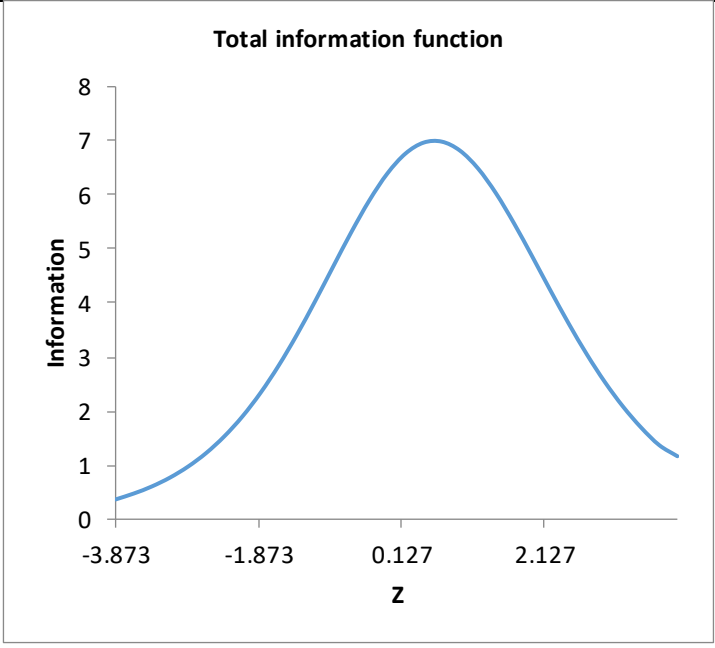
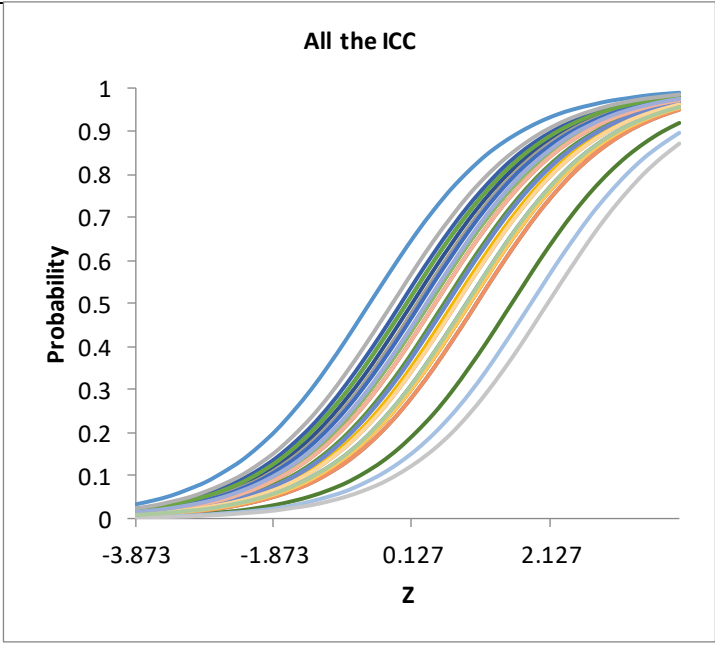
Rash metodi asosida test topshiriqlarining qiyinlik darajalari tahlili

O'qish

Test topshirig'i	Qiyinlik darajasi (b)	Test ma'lumot chizig'i / Element xarakteristika chiziq'lari
ITEM6	-1.802	 <p style="text-align: center;">Total information function</p> <p>The graph displays a single blue bell-shaped curve representing the total information function. The vertical axis is labeled 'Information' and ranges from 0 to 7. The horizontal axis is labeled 'z' and has tick marks at -3.873, -1.873, 0.127, and 2.127. The curve peaks at z = 0.127 with an information value of approximately 6.2.</p>
ITEM8	-1.250	
ITEM9	-1.091	
ITEM10	-0.941	
ITEM13	-0.844	
ITEM18	-0.703	
ITEM17	-0.703	
ITEM29	-0.703	
ITEM28	-0.658	
ITEM30	-0.390	
ITEM26	-0.390	
ITEM22	-0.347	
ITEM21	-0.260	
ITEM16	-0.260	
ITEM19	-0.217	
ITEM1	-0.174	 <p style="text-align: center;">All the ICC</p> <p>The graph shows multiple sigmoidal curves representing the Item Characteristic Curves (ICC) for various items. The vertical axis is labeled 'Probability' and ranges from 0 to 1. The horizontal axis is labeled 'z' and has tick marks at -3.873, -1.873, 0.127, and 2.127. Each curve represents a different item, with their difficulty levels indicated in the table to the left. The curves are shifted horizontally according to their difficulty levels, ranging from approximately z = -3.8 at the left to z = 3.8 at the right.</p>
ITEM14	-0.174	
ITEM4	-0.088	
ITEM25	-0.046	
ITEM27	-0.003	
ITEM3	0.083	
ITEM23	0.125	
ITEM20	0.746	
ITEM24	0.746	
ITEM15	0.889	
ITEM7	1.667	
ITEM12	1.804	
ITEM5	1.951	
ITEM2	2.199	
ITEM11	2.291	

Rash metodi asosida test topshiriqlarining qiyinlik darajalari tahlili

Leksik va grammatik kompetensiyalar

Test topshirig'i	Qiyinlik darajasi (b)	Test ma'lumot chizig'i / Element xarakteristika chiziq-lari
ITEM13	-0.487	 <p>Total information function</p> <p>The graph shows a single blue bell-shaped curve representing the total information function. The y-axis is labeled 'Information' and ranges from 0 to 8. The x-axis is labeled 'z' and ranges from -3.873 to 2.127. The curve peaks at approximately z = 0.127 with an information value of about 7.</p>
ITEM21	-0.156	
ITEM11	-0.033	
ITEM7	0.048	
ITEM18	0.048	
ITEM5	0.130	
ITEM10	0.212	
ITEM15	0.212	
ITEM17	0.254	
ITEM29	0.337	
ITEM4	0.379	
ITEM24	0.379	
ITEM2	0.464	
ITEM26	0.464	
ITEM12	0.594	 <p>All the ICC</p> <p>The graph displays multiple sigmoid curves representing the Item Characteristic Curves (ICC) for various items. The y-axis is labeled 'Probability' and ranges from 0 to 1. The x-axis is labeled 'z' and ranges from -3.873 to 2.127. The curves are colored in various shades (blue, green, orange, grey) and all show a similar sigmoidal shape, indicating that the items are measuring the same underlying construct.</p>
ITEM19	0.638	
ITEM23	0.638	
ITEM16	0.728	
ITEM28	0.774	
ITEM9	0.774	
ITEM1	0.915	
ITEM30	0.915	
ITEM14	0.963	
ITEM22	0.963	
ITEM8	0.963	
ITEM3	1.063	
ITEM20	1.063	
ITEM6	1.573	
ITEM25	1.851	
ITEM27	2.094	